

ferryhill
TRAVEL

A silhouette of the Eiffel Tower stands prominently on the left side of the image, set against a vibrant sunset sky with warm orange and yellow tones. In the foreground, a paved plaza with a grid pattern is visible, and several people are seen walking across it. The background shows a hazy cityscape with construction cranes.

School group tours

For more information or to book call us - 028 9045 4181

2011

Welcome

Knowledge through travel

Welcome to Ferryhill Travel's new 2011 brochure which offers a wealth of ideas for your educational tour. Established almost 40 years ago in Belfast, Ferryhill offers group leaders a personalised service with your own dedicated tour organiser who will assist you with planning your tour. Our 24 hour emergency service also provides you with added peace of mind while you are on tour so you are fully supported. We pride ourselves on a tradition of offering good value for money and quality educational tours tailored to our clients' needs. We are a well-established reputable company with a proven track record.

PREVIEW VISITS FOR FIRST-TIME GROUP LEADERS

"First-time group leaders" can visit a chosen centre before leading a group. This will enable you to plan your programme and complete your risk assessment of the accommodation and itinerary. Ferryhill are happy to provide two nights B&B accommodation for TWO persons in a twin room for these purposes. We are also happy to advise you on travel arrangements.

DIY DANGERS...BEWARE!

Some group leaders now plan so-called "DIY trips", where they bring together holiday flights and accommodation from different suppliers, such as from airlines and hotel bed-banks. However, despite what many group leaders believe, these holidays **are not protected** in the way a tour package bought from a Tour Operator would be under the ATOL Scheme.

If YOU book your travel arrangements.

Booking on-line with separate suppliers may seem like a cheap option, but if for example an airline were to collapse, you would have to make your own arrangements to get home and you could pay a lot more. You may also have to curtail or increase your stay in order to get available flights potentially adding more accommodation costs.

Should an airline fail and you've yet to travel on your tour you may have difficulties getting to the accommodation you booked separately. If you can't reach your destination you may lose the money you paid, and if there are last minute alternative flights, these may not operate on the same day and are likely to be more expensive.

That's why it pays to book with Ferryhill Travel, where you can have worry-free travel from the moment you book. As ABTA members we are always here to give you advice and assistance. Our ATOL license also protects you from losing your money or being stranded abroad.

RECESSION BUSTING TIPS FOR TRAVELLERS

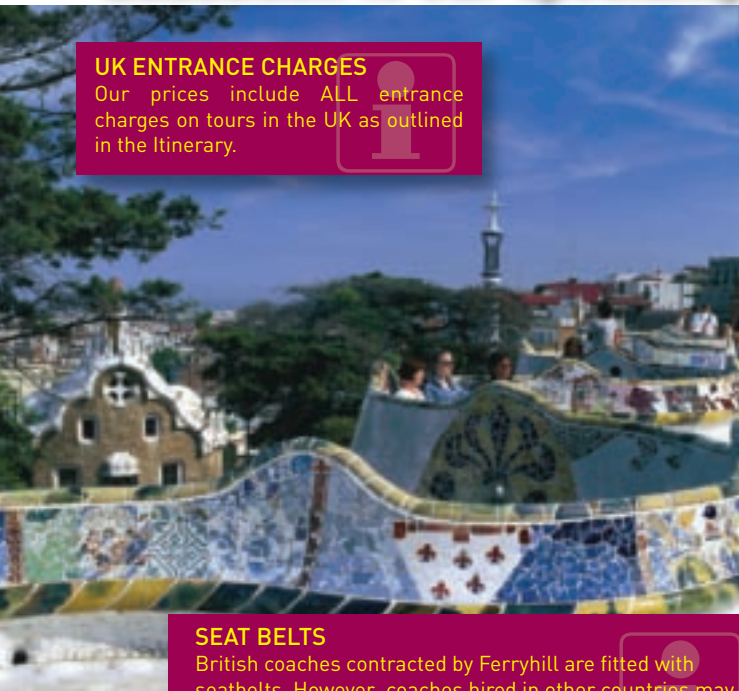
So who hasn't heard about the economic downturn? Don't panic, there are still ways you can take control of your finances and actually spend less all you need is a little flexibility. Here are a few of our ideas:-

- Book early for greater choice and cheaper flights
- Consider changing your dates of travel to less busy periods
- Travel by coach and ferry to mainland UK or Europe
- Ask neighbouring schools to join up with you on your trip to help fill the coach!
- Choose a 1:10 free adult place ratio instead of 1:8
- Take advantage of the many free museum visits in major UK cities
- Arrange ALL your meals and evening activities in advance so you can plan your budget before you leave.
- Reduce your tour by one night saving meals and accommodation for one night/day can make a difference
- Consider a completely NEW destination, sometimes tours to Europe can be cheaper than the UK so keep an open mind you could be pleasantly surprised!
- Consider downgrading your choice of accommodation, some hotel chains and hostels now offer excellent value for money with good functional rooms
- Travel light! Many airlines allow unlimited handbaggage so take advantage of this and save on baggage fees for checked baggage.

Education is our speciality

UK ENTRANCE CHARGES

Our prices include ALL entrance charges on tours in the UK as outlined in the Itinerary.



SEAT BELTS

British coaches contracted by Ferryhill are fitted with seatbelts. However, coaches hired in other countries may not have seat belts fitted as generally they are not yet subject to the same legislation.



IMPORTANCE OF LEARNING OUTSIDE THE CLASSROOM

It is widely recognised that by applying knowledge across a range of challenges, outside the classroom, children can build bridges between theory and reality. When these experiences are well planned and safely managed they can:-

- Help children develop their skills and independence
- Make learning engaging
- Nurture creativity
- Improve young people's attitudes to learning
- Stimulate and inspire!

EDUCATION IS OUR SPECIALITY

We pride ourselves on specialising solely in educational travel for school groups. In particular, we believe Ferryhill Travel has led the way for language travel in Ireland for many years and this is evidenced in our strong relationships forged with our European partners and maintained for almost 40 years.



ABTA's main aims are to maintain high standards of trading practice for both the travel industry and the consumers. Ferryhill Travel are fully bonded members of ABTA which means you can have worry-free travel. For more information visit www.abta.com



Ferryhill Travel are fully bonded ATOL agents. ATOL protects you from losing your money or being stranded abroad. It does this by carrying out checks on its members, requiring them to take part in a financial guarantee scheme. Ferryhill are pleased to

offer you this added security and peace of mind for air travellers. For more information visit www.atol.org.uk

CONTENTS

FRANCE

Paris Tours	4-5
Disneyland Paris	6
Language Tours	7
Parc Asterix	8
Opal Coast	9
Normandy	10

USA

New York	11
----------	----

SPAIN

Madrid & Valencia	12
Barcelona & Catalonia	13

BELGIUM/FRANCE

World War I	14
-------------	----

HOLLAND

Amsterdam & Noordwijk	15
Valkenburg	16

GERMANY

Rhineland	17
Berlin/Munich	18

POLAND

Krakow	19
--------	----

HUNGARY

Budapest	20
----------	----

CZECH REPUBLIC

Prague	21
--------	----

RUSSIA

Moscow & St Petersburg	22
------------------------	----

ITALY

Rome	23
------	----

SCOTLAND

Edinburgh Attractions	24
Edinburgh	25
Glasgow	26
Stirling	27

GREAT BRITAIN

Liverpool	27
York Attractions	28
York & Scarborough	29
London	30
London Attractions	31
Alton Towers	32
Manchester	33
Wales Attractions	34
Llandudno & Chester	35
Northumbria & Nottingham	36
Blackpool	37
Bath	37

INSURANCE

GENERAL INFORMATION	38
	39

Paris

City of culture, romance, art, fashion, and a city on the move. Paris is a capital that offers something for everyone's budget and tastes. It is simply bursting with museums and monuments. Talk to us about our educationally themed tours to Paris which cover topics including Art, Science & Technology, Fashion, Film & Media, Languages and more. These pages contain a few ideas and examples to get you thinking but we can design the tour specifically for your school group....there are many ways to discover Paris.

Fantastically well organised trip, which meant we could concentrate on looking after the pupils!

Miss McSherry, Belfast



PARIS HISTORY TOUR

Day 1

Flight Belfast/Dublin
Transfer to accommodation

Day 2

This morning visit The Army Museum where you can explore the World War I and II rooms before visiting the Eglise du Dome where Napoleon's Tomb can be viewed. Afternoon visit to the Carnavalet Museum which charts the history of Paris across the centuries.

Dinner in Paris followed by an evening cruise on the River Seine.

Day 3

Begin today with a visit to the Ile de la Cite where you can have a self guided tour of Notre Dame and a visit to the archaeological Crypt. Then, visit the former prison, La Conciergerie, where Marie-Antoinette was incarcerated before execution. Afternoon visit to Leclerc-Jean Moulin Museums where you can visit the exhibitions and learn more about daily life

during occupation, youth resistance and the liberation of Paris. Possible visit to the Shoah Memorial, dedicated to the memory of Jews deported from France.

Late evening meal in Paris then return to hotel.

Day 4

Morning at leisure in central Paris. You may like to take in the breathtaking views from the Eiffel Tower or visit the Arc de Triomphe before some free time for shopping on the Champs Elysees. Return flight Paris/Belfast or Dublin

ENTRANCES ARE NOT INCLUDED IN THE TOUR COST. TOURS MAY BE SUBJECT TO ALTERATION DUE TO FLIGHT SCHEDULE RESTRICTIONS.

TOURS CAN ALSO BE OPERATED OVERLAND BY COACH OR VIA FLIGHT TO LONDON, SAILING DOVER/CALAIS AND COACH TO PARIS.

Designer Guided Tours

Our representatives in Paris can take you on a themed tour of your choice including:
Kid's Gourmet Tour, Paris Impressionists, Moliere's Footsteps, Revolutionary Paris, French Language Guided Tour.

Meals

Venues can include Flunch, Self, Planet Hollywood, Hard Rock Café, Rainforest Café, Bistro Romain, Pizza del Arte, Courtepaille, Buffalo Bill's Wild West Show & Billy Bob's Country Western Saloon in Disney © Village. Packed lunches or meal vouchers available, as is advice on budget lunch venues. SUPPLEMENTS WILL APPLY REFER TO YOUR QUOTATION

Evening Activities

Illuminations Tour, Bowling, Swimming, Seine River Cruise, Disney Village, we can also advise on cultural entertainment or shows.

Other Visits

Louvre, Latin Quarter, Musee D'Orsay, Eiffel Tower, Montmartre, La Villette, Pompidou Centre, Versailles, Chartres.

Paris

ACCOMMODATION



We offer a range of accommodation in Paris to suit all budgets including city centre hotels, youth accommodation centres which offer great facilities for groups and suburban hotels. Here are just a few...

FIAP JEAN MONNET

Excellent centre for groups offering high standard youth accommodation in the 14th district. Rooms sleep four to eight persons. All ensuite. Facilities include meeting rooms, games room, bar and disco some evenings. Half board accommodation offers great value for money!

HOTEL ITINERAIRES

Two star youth hotel. En suite rooms mainly triples, quads. 8-bedded rooms with showers and wc nearby. Self service restaurant. La Defense area.

CITY CENTRE HOTELS

For many years we have worked with traditional city centre Paris hotels including some chains and independent hotels. Details on request.

SUBURBAN HOTELS

If you want to be away from the hustle and bustle we can also arrange hotels outside of Paris or closer to the magic of Disney if you prefer and it sometimes keeps the costs down too.

KYRIAD HOTEL DISNEYLAND® RESORT PARIS

Three star accommodation, twin/triple or quad rooms, all ensuite. Buffet breakfast and a 10 min shuttle bus drive from the Parks.



PARIS CLASSIQUE TOUR

Day 1

Flight Belfast/Dublin to Paris.
Transfer to hotel.

Day 2

Enjoy a guided tour of Paris to discover some of its secrets. Afternoon visit to one of Paris' museums for example, the Musee du Louvre where you can visit the Mona Lisa. Dinner in Paris. Evening cruise on the River Seine.

Day 3

Full day excursion to Versailles where you can explore the famous Chateau and gardens. Afternoon in Paris where you can experience Montmartre and visit Sacre Coeur Basilica. Dinner in Paris. Evening bowling or swimming.

Day 4

"Behind the scenes" Tour of the Stade de France followed by flight home.

ENTRANCES ARE NOT INCLUDED IN THE TOUR COST. TOURS MAY BE SUBJECT TO ALTERATION DUE TO FLIGHT SCHEDULE RESTRICTIONS.

Disneyland® Paris



A Magical Dream Destination

Imagine a land where the wonderful world of Disney comes alive. Imagine a Disneyland® Park, where make believe is real. And Walt Disney Studios® Park, where the magic of Disney meets the magic of cinema.

Imagine a Disney® Village, where fun and entertainment stay open day and night. Welcome to Disneyland® Paris. A holiday destination like no other.

The Magic is closer than you think.

NEW - Toy Story Playland* NOW OPEN!

Toy Story Playland has the BIGGEST new family attractions. They're GIANT – when you're shrunk to the size of a toy! Join the toys for playtime in Andy's backyard where everyone can explore this oversized world with its three larger-than-life rides – Toy Soldiers Parachute Drop, Slinky Dog Zigzag Spin⁽¹⁾ and RC Racer⁽²⁾.

Andy's away and the toys are ready to play!

*Toy Story Playland is inspired by Disney•Pixar film Toy Story

Disney Hopper Ticket Offer!

Get a 2 Day Hopper Ticket for the price of a 1 Day Hopper!

Disneyland®

PARIS

(1) Slinky® Dog is a registered trademark of Poof-Slinky, Inc. All rights reserved.
(2) Hot Wheels® is a registered trademark of Mattel, Inc. Hot Wheels® Trademark and Track used with permission ©2009 Mattel, Inc. All rights reserved.

SAMPLE 3 DAY TOUR

DISNEYLAND® PARIS

Day 1

Flight Belfast/Dublin to Paris coach straight to Kyriad Hotel, Disneyland Paris. (dinner is NOT provided this evening due to flight timings).

Day 2

Full day visit to Disneyland Paris where your Hopper Ticket will permit you to enter either Disneyland® Park or Walt Disney Studios® Park. Dinner at Planet Hollywood®.

Day 3

Enjoy a second day at the Disney® Parks, before departing early evening for your return to the airport (dinner is NOT provided this evening you can eat at one of the Resort restaurants or at the airport prior to departure).

Tour may need to be adjusted subject to flight schedules.



Language Tours

An international experience awaits you! Put language into context by staying with host families. Or, incorporate some language classes or combine both. Allow your students to reinforce and develop the language skills they have learned in your classroom. We can design a tour to suit your needs, here are a selection to show you some possibilities.

PARIS HOMESTAY EXPERIENCE

It is widely acknowledged by language teaching experts that "home stays" are an effective way of gaining confidence and a sure way to improve language skills. Students normally stay in pairs in the family. You will have the assistance of our local organiser throughout the stay. It is advisable to arrange your stay to include a weekend, your pupils can spend all day Sunday with the host family to maximise the immersion experience.



FRENCH SCHOOL IN PARIS

We work with a school in central Paris who can also offer French language tuition in small classes of 8 to 10 participants. They offer a wide range of French courses combined with cultural workshops for students from 16 years old using dynamic and communicative teaching methods.

PARIS HOMESTAY

Day 1

Arrival and meet our local organiser and your host families

Day 2

Half day guided tour of Paris
Afternoon visit to the Musee du Louvre followed by time on the Champs Elysees and view the Arc de Triomphe.
Evening spent "en famille"

Day 3

Morning excursion to Chateau de Versailles
Afternoon at leisure in central Paris
Evening spent "en famille"

Day 4

Full day excursion to Disneyland Paris or visits of your choice
Evening spent "en famille"

Day 5

Bid farewell to your host families and return to Paris for some last minute sightseeing before your return flight to Belfast/Dublin

HISTORIC ROUEN HOMESTAY & FRENCH TUITION

Our team in Rouen have been sharing their passion for French language and culture since 1981, welcoming approximately 600 students each year. The teaching methods are lively and effective due to the variety of methods and relaxed atmosphere based on sharing and discussions. All teachers have extensive experience in teaching French as a second language and are committed to the students making maximum progress in the minimum amount of time. The courses are delivered in accordance with the Cadre Europeen Commun de Reference des Langues. Accommodation is arranged with host French families and after an initial French level test your group can take part in 3 hours of French classes while the afternoon can be spent visiting local museums in Rouen.



HISTORIC ROUEN

**5 DAYS (4 NTS ROUEN HOST FAMILIES) AIR
MINIMUM GROUP SIZE 30 STUDENTS**

Day 1

Arrival in Paris, transfer to Rouen and meet families

Day 2

French test then commence lessons from 1000 hours to 1300 hours
Afternoon visit to the Musee des Beaux Arts
Evening spent "en famille"

Day 3

0900-1200 hours French lessons
Afternoon discovery of Rouen
Evening spent "en famille"

Day 4

0900-1200 hours French lessons
Afternoon visit to the Musee des Antiquites
Evening spent "en famille"

Day 5

Depart for Paris and return to Belfast/Dublin

Parc Asterix



©2010 LES ÉDITIONS ALBERT RENÉ / GOSCINNY-UDERZO

Welcome to the zaniest theme park around! In the land of the Invincibles, we laugh, we quiver with excitement, we race, we glide, we soar, we splash, we jump, we play, we capsize, we are amazed and thrilled!

Venture into the heart of the famous Village and sample the joys of Gaulish life; plunge into the Roman Empire and join the Legion or watch our proud Legionnaires perform feats of skill in the Arena; immerse yourself in mythology in Ancient Greece; put your courage to the test squaring up against the Vikings; and travel through time in the streets of Paris, from the Middle Ages to the nineteenth century.

Throughout your journey, the park's thrilling attractions will keep your head spinning: Défi de César, the incredible ride where you are the hero; Goudurix, the roller coaster that turns you upside down 7 times; Tonnerre de Zeus, the most impressive wooden roller coaster in Europe, and much more! And don't forget our shows, where humour, friendliness and impertinence embody the spirit of the Park, from dolphin acrobatics at the Théâtre de Poséidon, to the amazing stunts of 'Main Basse sur La Joconde'.

Lots of challenges for big and small Gauls to overcome if they hope to become true Invincibles themselves!

ACCOMMODATION



See details on Page 5

GAULISH ADVENTURE TOUR

Day 1

Flight Belfast/Dublin to Paris
Transfer to hotel and settle in

Day 2

Full day of excitement as you race, glide, soar, splash, jump, play, are amazed and thrilled at Parc Asterix. There's something for everyone. Followed by dinner and swimming at Aquaboulevard de Paris which offers visitors 2 wave pools, 11 toboggans and jacuzzis and more!

Day 3

Full day excursion to Paris where you are free to explore the capital. Afternoon visit to the Musee Grevin famous Wax Museum where you can see nearly 300 figures including Celine Dion, Nicolas Sarkozy, Barack Obama and Michael Jackson. Don't miss the Palais des Mirages, a giant kaleidoscope, you won't believe your eyes! Dinner at Hard Rock Cafe Paris Evening cruise on the River Seine

Day 4

Morning « behind-the-scenes » tour of Stade de France followed by flight to Belfast/Dublin

ENTRANCES INCLUDED IN THIS TOUR ARE ONE DAY PARC ASTERIX, SWIMMING AT AQUABOULEVARD, VISIT TO WAX MUSEUM AND STADE DE FRANCE ALL OTHER VISITS ARE AT AN ADDITIONAL COST. TOURS MAY BE SUBJECT TO ALTERATION DUE TO FLIGHT SCHEDULE RESTRICTIONS. TOURS CAN BE ADJUSTED TO OPERATE OVERLAND OR VIA FLIGHT TO LONDON AND SAILING DOVER/CALAIS ETC.

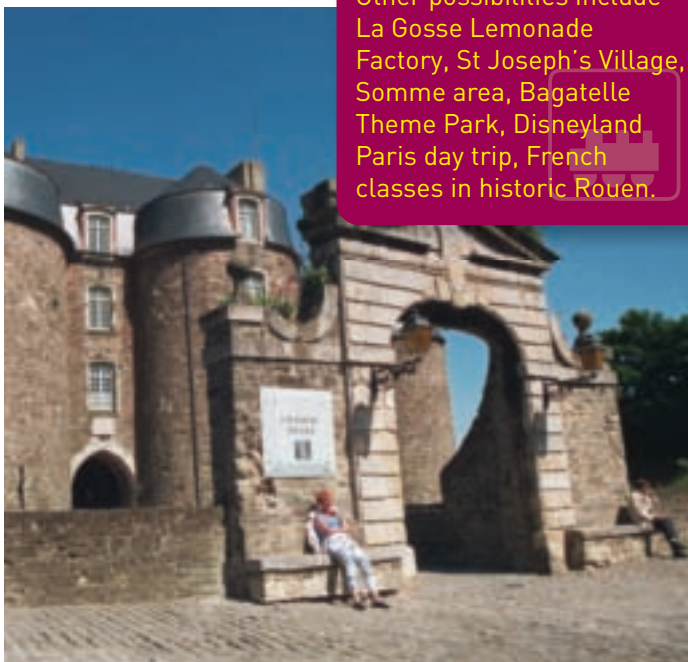
Opal Coast



The Opal Coast is known as the “jewel of France”. It rejoices in miles of fine golden beaches and sandy dunes. The limitless excursion opportunities, together with the historic character of friendly villages, fascinating fishing ports and quaint seaside towns have made this venue a popular choice for our schools.

Excursions

Other possibilities include La Gosse Lemonade Factory, St Joseph's Village, Somme area, Bagatelle Theme Park, Disneyland Paris day trip, French classes in historic Rouen.



TASTE OF FRANCE TOUR

Day 1

FLIGHT BELFAST/LONDON

Flight Belfast/London then coach to Dover, sailing to Calais and onward to your accommodation.

Day 2

BOULANGERIE, PATISSERIE/CHOCOLAT FACTORY

Morning visit to Trupin famous boulangerie and patisserie where you can try your hand at croissant making. Followed by a tour and tasting session at the Chocolat de Beussent Factory.

Day 3

MARKET/BOULOGNE

Experience the hustle and bustle of the busy Etaples Fish Market. Then take an afternoon excursion to Boulogne sur Mer where you may like to visit the Aquarium Nausicaa or have some time for shopping.

Day 4

CHEESE FARM/AQUALUD

Morning tour of Sire du Crequy Cheese Farm followed by a fun-filled afternoon at nearby Aqualud.

Day 5

CALAIS/DOVER/FLIGHT TO BELFAST

Morning free for shopping at Calais before sailing to Dover and on to London Airport for flight to Belfast.

ENTRANCES NOT INCLUDED

TOUR CAN ALSO OPERATE VIA BELFAST/PARIS FLIGHTS

ACCOMMODATION



HIPPOTEL LE TOUQUET

This modern 2 star hotel situated near the Canche River offers excellent facilities for schools. One wing of the hotel is usually reserved for your school. Also boasts a games area with pool table, video games, football table, pinball machines, meeting rooms and indoor heated pool. Crepe making demo can be arranged for one evening during your stay. Rooms are normally 4/6 bedded ensuite. Large dining area and bar.



CES CALAIS

Beachfront location. This centre has been accommodating groups since 1993. Rooms are mainly twin with communicating bathroom between every 2 rooms. Singles available on request. Good location for nearby evening activities including swimming, cinema, ice skating and bowling.



HARDELLOT VILLAGE VACANCES

Situated in Hardelot Plage this centre offers basic accommodation with pupils accommodated in 3 or 4-bedded rooms with bathrooms on the landing. Adults in ensuite rooms. This centre also offers themed stays including Sailing and Kayaking, Marine Life and the Environment which can be conducted in English or French. Wifi, Restaurant, Bar.



OTHER COMFORTABLE 2 STAR HOTELS ARE ALSO AVAILABLE IN THE CALAIS AREA IF REQUIRED.

Normandy

Bring history to life by visiting the beaches where thousands of Allied troops landed at the start of one of the largest amphibious assaults ever launched. Let students visit the cemeteries and explore the battlegrounds of one of the defining conflicts of the 20th century. Sense it and be moved by it....

PHOTOS COURTESY OF NORMANDY TOURISM



ACCOMMODATION



BON SEJOUR

Modern centre located at the edge of a wide, sandy beach and provides excellent accommodation for groups in mainly four bedded rooms, all en-suite. Dining room with a sea view and onsite facilities include mini-golf, table tennis and classrooms.

KYRIAD CAEN SUD

Comfortable 2 star hotel with twin, triple and quad rooms. Restaurant and meeting rooms.

ETAP HOTEL BAYEUX

Economical and practical accommodation 15 minutes from the landing beaches in the heart of Calvados. Comfortable rooms with separate shower and toilet, TV, wifi.

SPECIALIST GUIDES MAY BE AVAILABLE DURING YOUR TOUR. ASK FOR DETAILS.



EXCURSIONS

Other possibilities are Bayeux Tapestry, Battle of Normandy, Caen Peace Museum, Battery Museum Merville, Arromanches 360, DDay Academy (for small groups).

D DAY LANDINGS TOUR

Day 1

Flight to London, travel by coach and ferry via Dover/Calais onto your accommodation.

Day 2

Morning visit to Pegasus Bridge, which was the objective of the 6th Airborne Division. See the famous Gondree Café, a former aid-post which today is a living museum. Followed by visits to the Airborne Museum in Ranville and the Commonwealth cemetery. This afternoon continue along the coach following Sword, Juno and Gold Beaches to arrive in Arromanches, scene of Mulberry Harbour.

Day 3

Visit to Pointe du Hoc headland and Omaha Beach before a visit to the Airborne Museum in St Mere Eglise. Afternoon visits could include St Malo or Mont St Michel.

Day 4

Depart hotel for return journey to Calais. Sailing to Dover then onwards by coach to London Airport for flight to Belfast.



New York



Take a bite of the big apple. New York has it all for an action-packed tour. See the sprawling skylines of Manhattan and stride along the sidewalks. Get a bird's-eye view of the city from the Empire State Building or take a relaxing stroll in central park. Art enthusiasts can wonder at the Museum of Modern Art on 11 West 53rd Street or MOMA with its fine collections of art. Shop till you drop or take in a show on Broadway!



Excursions

Guggenheim Museum, Museum of Modern Art (MOMA), Shopping at Macy's or Bloomingdales, Empire State Building, Statue of Liberty, Manhattan



ACCOMMODATION



WEST SIDE AND VANDERBILT YOUTH CENTRES

Budget Youth Accommodation which offers basic accommodation bunk beds or twin rooms, with shower and toilet facilities on each floor. Meals can be arranged for a supplement.

HOTEL ACCOMMODATION

We have a selection of hotels in New York, depending on season. Details available at time of booking. Please note that hotels in New York are offered on a basis of two double beds in each room accommodating four persons.

SAMPLE 5 DAY TOUR

Day 1

Flight Belfast/Newark or Dublin/JFK and transfer to accommodation

Day 2

Your own choice of excursion (you can use public transport/on foot. If you require a programme of visits with guides this would be additional to your tour cost)

Day 3

Your own choice of excursion

Day 4

Your own choice of excursion

Day 5

Transfer to Airport for return flight

Madrid

Madrid - A cosmopolitan city, a business centre, and home of the Spanish Royal Family, Madrid plays host to fine museums such as the Prado, Queen Sofia's and is home to the Royal Palace of Madrid. Using Madrid as your base allows you to include day trips to Toledo, Segovia, El Escorial and Alcala de Henare

PHOTOS COURTESY OF TURESPANA



MADRID 4 DAY TOUR

Day 1
Flight Dublin/Madrid. Settle in to hotel.

Day 2
Morning general sightseeing tour of the city followed by afternoon visit to the Prado Museum.

Day 3
Morning visit to Real Madrid's Bernabeu Stadium. Afternoon fun at Aquapolis Waterpark (opens June to Sept) or instead a full day visit to Warner Brothers Park.

Day 4
Free time for last minute sightseeing or shopping before return flight to Dublin.



ACCOMMODATION



We offer a range of three star hotels in central Madrid. Please call us for availability.

OTHER ATTRACTIONS

Reina Sofia Art Centre, Royal Palace, Zoo, Aquarium, Teleferico, Retiro Park Flea Market



Valencia

Valencia - One of the most beautiful cities in Mediterranean Spain, renowned for its radiant light and maritime spirit. Here you will see relics of Roman and Islamic cultures as well as contemporary structures such as the City of Arts and Sciences offering so much to explore and learn...



VALENCIA 4 DAY TOUR

Day 1
Depart Belfast, flight to Alicante, transfer to hotel in Valencia.

Day 2
Morning visit to the Silk market, Lonja de la Seda, which resembles a medieval castle and is now a UNESCO Humanity's Heritage building. Visit the nearby central market and Santos Juanes church complete with dome and decorative frescos. Afternoon visit to Valencia's busy port area where you may like to take a leisurely pleasure boat trip around the area. Later visit one of the city's three beaches - Las Arenas, La Malvarossa or Alboraya. Enjoy the sea breeze or sip a refreshing drink at one of the little seafront cafes

Day 3
Full day visit to the City of Arts and Sciences complex. This complex is comprised of four buildings. L'hemisferic is a Laserium, Planetarium and Imax. The Science Museum offers a "hands-on" approach to learning and l'Oceanographic is a giant marine park with Dolphinarium. The fourth building is home to the Palau de les Arts Opera house. (various ticket options are available. Ask for details).

Day 4
This morning travel south west of the city for a full day visit to the Castle of Xativa with its 30 towers and four fortified gates. Visit the town below and seek out the plaza del Mercat amongst other things.

Day 5
Return flight.

ACCOMMODATION



We offer a range of three star hotels in central Valencia. Please call us for availability.

OTHER ATTRACTIONS

SERRANOS TOWERS, CATHEDRAL, RICE MUSEUM, FALLAS MUSEUM, FINE ARTS MUSEUMS, NATIONAL CERAMICS MUSEUM, GULLIVERS CHILDRENS PARK, MODERN ART MUSEUM, AQUAPOLIS AND TERRA MITICA BENIDORM. SOME VISITS HAVE LIMITED OPENING PLEASE CHECK FOR DETAILS.



Barcelona

Barcelona boasts outstanding Gothic and contemporary architecture, quirky museums and shops, and a thriving port not to mention its fabulous beaches and the picturesque hills of Montjuic. Take time to stroll the narrow winding streets of the gothic quarter, hit the beach or laze in the parks soaking up the atmosphere in this progressive dynamic city where you will receive a warm welcome. Barcelona inspires...



A/AS LEVEL ART TOUR

Day 1

Flight to Barcelona. Time permitting begin with a visit to La Sagrada Familia Cathedral. Continue to hotel for check-in

Day 2

Morning visit to Poble Espanyol where you can stroll through the streets and squares of an authentic Spanish "village"....see live artisans at their work!
Afternoon visit to National Museum of Catalan Art where you can journey through almost a thousand years of art in the home of one of the richest collections of Catalan Medieval Art and Romanesque murals. You may also like to visit the nearby Joan Miro Foundation which houses a permanent collection by this world-renowned artist.

Day 3

Today is Gaudi day! Begin with a visit to Casa Batllo a fine example of art nouveau modernisme, walk through the former apartments of the Batllo family, venture into the attic and step onto the rooftop to see the famous undulating chimneys. Next visit La Pedrera where you can examine the imposing stone facade and wrought iron balconies then visit inside for more surprises. Afternoon visit to La Sagrada Familia Cathedral the only one in the world that is still under construction! If you have some spare time this afternoon you can visit Parc Guell, a World Heritage Site, with fine views of the city and a tiny Gaudi museum.

Day 4

Morning visit to Barcelona's Modern Art Museum which houses works by Catalan, Spanish and international artists. You may like to visit nearby Contemporary Culture Centre dedicated to the theme of the city and urban phenomenon.
Afternoon free for shopping or general sightseeing in the city centre.

Day 5

Time permitting you may like to spend some time at the beach before returning to the airport for flight to Belfast

ACCOMMODATION



BARCELONA URBANY

Brand new vibrant, trendy hostel that offers hotel-like facilities and services. All rooms en-suite. Swimming pool and fitness suite. Central location.

ALBERG PERE TARRES

Budget accommodation for groups in 8 bedded rooms. Teachers in doubles or singles. All rooms have a full bathroom air-con and heating. Common area with free internet access, wifi, giant TV screen, board games, table tennis and restaurant.

CITY CENTRE HOTELS

We also work with a variety of good value city centre hotels. Check with us for availability.

Catalonia

Catalonia, with its golden mediterranean beaches, artistic interests, historic buildings and landscapes, Catalunya has something for everyone. In addition, you have the choice of exploring both the local sites and the bustling city of nearby Barcelona.



CATALONIA TOUR

Day 1

Arrival and settle in to hotel. Free time to explore your local area perhaps including a visit to the beach.

Day 2

Today you may choose between a full day excursion to Barcelona city with its many attractions. Or you may like to spend time visiting some of the local sights in your hotel area these may include Tossa del Mar, Tarragona, Besalu, Montserrat, Girona, Empuries, Roses Fishing Port, Dali Museum etc.

Day 3

An adrenalin-packed day awaits you at Port Aventura in Salou

Day 4

Fun filled excitement for your group today at Port Aventura Aquatic Park

Day 5

Free time before return flight to Belfast

ACCOMMODATION



We offer a range of three star hotel accommodation in the Costa Brava, Costa Maresme and Costa Daurada areas. Details on request.

A/AS LEVEL BUSINESS STUDIES TRIPS ALSO AVAILABLE. CALL US FOR DETAILS



GCSE & A/AS LEVEL SPANISH LANGUAGE TOUR BASED AT A CITY CENTRE SCHOOL. CALL US FOR DETAILS.



Battlefield Tours

Bring the past to life on our battlefields tours. Give students invaluable insights into one of the most significant events in recent times. Tours can be tailored to your level of study. Tours can include Ypres Salient or Somme areas or specialise in either. Specialist Battlefields Guides may also be available to give your group further insight into the Great War. Experience it and be moved by it...

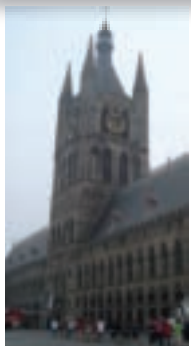


EXCURSIONS

New Australian and British Cemetery at Fromelles, Historical of the Great War Peronne, Sanctuary Wood, Hill 60, Hill 62, Hellfire Corner, Poperinge, Talbot House, Bellewaerde, Theme Park, Bruges, La Boiselle, Lochnagar Crater

**PERFECT FOR
GCSE HISTORY
STUDENTS**

**ASK ABOUT OUR
SPECIALIST
BATTLEFIELD
GUIDES**



WW I BATTLEFIELDS TOUR

Day 1

Flight to London, onward by coach then sailing Dover/Calais to your accommodation. Settle in.

Day 2

Morning visit Messines Island of Ireland Peace Park followed by a visit to In Flanders Fields Museum in Ypres.

Afternoon visiting Essex Farm Cemetery and Field Dressing Station where the famous John McCrae worked. Followed by visits to Tynecot cemetery, Passchendaele and finally the Germany cemetery at Langemark.

Day 3

Morning visit to Vimy Ridge Memorial. Take a tour of the underground tunnels and visit the reconstructed trenches and see the crater. Followed by an afternoon visit to Thiepval Memorial to the Missing and nearby Ulster Tower. Then onto Beaumont Hamel and Newfoundland Park.

Day 4

Morning at leisure in Ypres before departing for Calais. Sailing to Dover and onward by coach to London. Flight to Belfast/Dublin

ACCOMMODATION



THE MENIN GATE YPRES

Next to the Menin Gate this centre offers excellent facilities for school groups. 11 Rooms, 52 Beds all en-suite. Free Internet. Entertainment Facilities onsite. Plus swimming and bowling nearby.



YPRES LODGE

Situated one mile from the Menin Gate, the lodge hosts students in rooms with 3 to 6 beds. All rooms have en-suite facilities and TV.

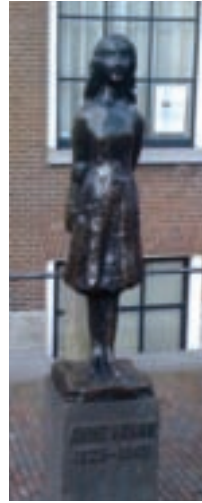


HOTEL MODERNE ARRAS

Three star hotel in the heart of Arras. Good standard, 3 or 4 bedded rooms with staff normally in twins. All en-suite. Good base for Somme and Vimy visits.

Amsterdam & Noordwijk

A school tour to the Netherlands offers a wonderful choice of contrasting regions, a stroll through the heart of Amsterdam reveals countless attractions with a rich artistic heritage with masters Rembrandt, Vermeer and Van Gogh. Travel out of the city to the quiet seaside town of Noordwijk-aan-Zee, situated in the heart of the bulb growing region and surrounded by woods and sand dunes.



ART EXCURSIONS

Van Gogh, Rijksmuseum, Stedelijk Museum of Modern Art, Rembrandts House. City Museum Hague home to Vermeer's View of Delft, Droller Muller Museum

CROSS CURRICULAR EXCURSIONS

Duinrell Leisure Park, Efteling, Madame Tussaud's, Zaanse Schans, Delft Pottery, Diamond Factory

GEOGRAPHY EXCURSIONS

Rotterdam Port Experience, Zinderkerk Urban Planning Centre, Delta Expo, Expo Haringvliet, Watersnood Museum



NOORDWIJK 4 DAY TOUR

Day 1

Flight Belfast or Dublin to Amsterdam. Afternoon canal cruise (subject to flight timings).

Day 1

Morning visit to Anne Frank's house where Anne and her family were hidden during the war. Afternoon excursion to Amsterdam Arena for a World of Ajax tour.

Day 1

Morning visit to Nemo which is packed with exciting things to do and discover. You will smell, hear, feel and see how the world works. Afternoon canal cruise.

Day 1

Visit to Madurodam, the smallest city in the Netherlands, canals, gabled houses and all kinds of typical Dutch scenes – the Netherlands in miniature. Return to airport for flight.

NOORDWIJK ACCOMMODATION



HOTEL AAN ZEE

Situated in the centre of Noordwijk, the rooms are 3-6 bedded rooms some of which have bunk beds. Twins and singles for staff. All rooms en-suite.

HOTEL DE OSSEWA

Close to the beach and town centre. This hotel accommodates one group with a maximum of 50 persons. Rooms are 3/5 bedded some of which are bunk beds and all with private facilities.

HOTEL ZORN

A single group hotel situated close to the beach. Rooms are en-suite and mainly 3/4 bedded. Purpose built games room on site.

AMSTERDAM ACCOMMODATION



HOTEL ACRO

Situated close to the Rijksmuseum, this hotel offers 3 or 4-bedded en-suite rooms with twins for staff

STAYOKAY - ZEEBURG

Located about 15 minutes east of Amsterdam offering quality budget accommodation.

Valkenburg

Situated in the province of Limburg... which forms part of the Ardennes and is conveniently located at the crossroads of four countries - the Netherlands, Germany, Belgium and Luxemburg - Valkenburg is a colourful and lively town which has everything necessary to make a successful visit. Its many facilities include a chairlift, go-karts, grottoes, working model coal mine, bobsleigh runs and swimming pools...



ECONOMIC OPTION
FLY TO LONDON AND
TRAVEL ONWARD BY
COACH & FERRY

ATTRACTIONS

Anne Frank's House

Visit Anne Frank's House in Amsterdam. Depicting the horrors of Nazi occupation.

Efteling

Efteling is a magical experience which invites you on a thrilling adventure. Take a trip on the Pagode or one of the many attractions for the dare devils.

Amsterdam Canal Cruise

Take a leisurely cruise around the city.

Rhine Cruise

Take a trip into Germany to join a relaxing cruise along the River Rhine.

Maastricht

The first Dutch city to be liberated by the Allies during World War II. Take a cruise on the River Maas.

ACCOMMODATION



HOTEL DEN HALDER

This centrally positioned hotel offers very welcoming accommodation. All rooms have private facilities, mainly 3 or 4 bedded rooms with twins for staff.

HOTEL WALRAM

A lovely hotel offering spacious en-suite rooms mainly twins or triples.



SAMPLE 5 DAY TOUR

Day 1

Depart Belfast/Dublin for flight to Amsterdam or Brussels. Guided tour of the city on arrival before continuing to Valkenburg.

Day 2

Morning visit to the Town Caves. The Romans started work on these caves around 2000 years ago. Continue to Vaals to visit the Drielandenpunt. Followed by a visit to the American War Cemetery at Margraten.

Day 3

Morning visit to Wilhemina Tower for a fantastic view over Valkenburg and the Geul Valley. You might like an exhilarating ride down the toboggan run. Afternoon visit to Valkenier Park.

Day 4

Depart for Phantasialand in Bruhl, Germany's largest theme park. Take a ride on the Black Mamba, Talocan or the Colorado Adventure.

Day 5

At leisure this morning before your return to the airport for a flight to Belfast/Dublin.

Rhineland

The Rhineland is One of the most renowned regions in Germany... the Rhine Valley has much to offer school parties. The area is extremely picturesque – at every turn a castle or romantic nooks and crannies. To fully appreciate the scenery we highly recommend that you take a Rhine cruise to relax and view it all from the ship.



ATTRACTIONS

Marksburg Castle

The only hill castle on the Rhine that was never destroyed. This impressive castle presents a host of fascinating artefacts that brings the Middle Ages to life.

Niederwald Memorial

Memorial to the German Empire dated 1871.

Rhine Valley Boat cruise

Moselle Valley & Burg Eltz Day trip

Travel along the Moselle Valley to visit the fairytale castle of Burg Eltz. Visit Cochem and Trier, birthplace of Karl Marx.

Day trip to Mainz and the Taunus Valley

Scenic route to Mainz, a key city in the Roman Empire, which suffered greatly in World War II. Visit the Gutenberg Printing Museum, where you will see the famous Gutenberg Bible.

ACCOMMODATION



HOTEL RHEINTAL

This family run hotel offers very comfortable accommodation in mainly three to four bedded rooms, all of which have private facilities.

POHL'S RHEINHOTEL ADLER

This attractive hotel is centrally located directly by the Rhine, with superb views of Rheinfels Castle as well as Burg Katz and Maus. Groups are accommodated in mainly three to four bedded rooms, all with private facilities and the hotel also has an indoor swimming pool, sun terrace, video and TV.

EXCURSIONS

Rhine valley boat cruise, Siebengebirge and Cologne, Phantasialand Theme Park, Moselle Valley, Mainz and Taunus Valley



SAMPLE 5 DAY TOUR

Day 1

Flight Dublin/Brussels coach to your hotel

Day 2

Travel this morning to St Goar, via the town neighbouring castles "Burg Maus" and "Burg Katz" where you may visit the splendid castle ruin of Burg Rheinfels. Its clock tower affords a commanding view of the fortress and valley below. Continue to the pretty town of Boppard for a walk along the tree-lined Rhineallee or alternatively join one of the Rhine cruises to see the rock of the Lorelei. Return to the hotel via the lively wine town of Rudesheim where you may visit Siegfried's Mechanical Museum.

Day 3

Morning visit to Siebengebirge or the Seven Mountains, the traditional home of Snow White and the Seven Dwarfs. Make a stop at Königswinter where you may join the rack railway to the Drachenfels Mountain. Continue north to Cologne where you can visit the famous cathedral or chocolate factory.

Day 4

Full day excursion to Phantasialand – Germany's largest theme park. Take a cable car into the world of Arabian Knights, rediscover the dinosaurs, take a ride on the space centre roller coaster or ride the Mexican silver mine!

Day 5

Travel to airport. Flight to Dublin.

Berlin

Berlin - A city of contrasts and contradictions. Until the momentous events of November 1989 the divided city developed under different ideologies – now you can compare East and West, past and present in this reunited city. Bring history alive as you travel through the major sites and attractions, feel it, sense it...



BERLIN HISTORY TOUR

Day 1
Flight Dublin/Berlin

Day 2
Morning tour of a Bunker from World War II. Followed by a visit to the Reichstag, seat of the German Parliament then onto Brandenburg Gate, Checkpoint Charlie Museum, and finally the Berlin Wall.

Day 3
Morning visit to the Stasi (East German Secret Police) Headquarters before visiting the Stasi Prison at Hohenschonhausen where many people who tried to flee to the West were detained. Afternoon at leisure in central Berlin for some shopping or general sightseeing.

Day 4
Morning visit to Saschenhausen Concentration Camp – audio guides available. Afternoon at leisure in the Potsdam area where you may wish to visit Belvedere Palace and Gardens.

Day 5
Return flight to Dublin

ACCOMMODATION



We use a variety of good youth hotels and two and three star hotel accommodation in central or suburban Berlin. Please ask for availability

EXCURSIONS INCLUDE

OLYMPIC STADIUM , WANNSEE CONFERENCE, JEWISH MUSEUM HOLOCAUST MEMORIAL, POTSDAMMER PLATZ, TOPOGRAPHY OF TERROR, CHARLOTTENBURG CASTLE, STORY OF BERLIN, BAUHAUS MOVEMENT MUSEUM, TV TOWER, BOWLING



Munich

Munich - Capital of Bavaria, Munich offers grand palaces, castles, parks and a variety of museums and churches all worth visiting. You will find something that interests you in this multifaceted city...



MUNICH EXPLORATION

Day 1
Flight Dublin/Munich. Flight times permitting general sightseeing tour of Munich

Day 2
Morning visit to Dachau Concentration Camp and Memorial Site. Originally built under orders from Himmler, this former SS murder camp, held captive over 200,000 prisoners from 34 countries. Afternoon visit to BMW Museum and nearby Olympic Park venue for the 1972 Olympic games.

Day 3
Morning visit to Neuschwanstein Castle, the fairytale castle of King Ludwig built in 1868, which stands on a jagged cliff above the river valley. Afternoon visit to Allianz Arena. Located north of Munich, this futuristically designed football stadium is home to TSV 1860 Munich and FC Bayern Munich teams.

Day 4
Full day excursion to Salzburg in Vienna where you can explore the city and its cathedral and castle.

Day 5
Free time in Munich. Flight to Dublin

ACCOMMODATION



We use a variety of good youth hotels and two and three star hotel accommodation in central or suburban Munich. Please ask for availability

OTHER VISITS

Deutsches Museum, Cathedral, Opera, Bavaria Film Studios, Nymphenberg Palace, River Rafting on Isar



Krakow

Make every moment a moment of history... Journey to a renaissance Royal Castle, St Mary's Basilica, Cloth Hall, the mysterious streets of the Old Town, Kazimierz and visit the scene of the chilling tragedy that was Auschwitz.



EXCURSIONS

Royal Castle on Wawel Hill, Main Square, St Mary's Church, Vistula River Trip (May – Sept), Nowa Huta District, Aqua Park

OUTSIDE THE CITY

Pope John Paul II Museum Wadowice, Ojcowski National Park, Pieskowa Skala and Castle, Barbakan, Tatra Mountains and Zakopane Town, Eagle-Nest Castles

ACCOMMODATION



HOTEL START

Two star hotel which offers good value comfortable rooms. Hotel is situated only a short distance from the historic centre of Cracow and the Wawel Castle.

DIZZY DAISY DOWNTOWN HOSTEL

Budget city centre hostel. Twin ensuite rooms and studio apartments, two private rooms sharing one bathroom. Quiet and comfortable. Modern décor.

Communism Tour
Take the cult tour
with crazy guides!



KRAKOW TOUR

Day 1

Flight Belfast/Krakow

Day 2

Morning visit to the area of Kazimierz which was formerly an independent city. Today it is a neighbouring district to Krakow which tells the story of the history of Polish Jews. Visit the system of narrow streets, the markets, see the small tenements, synagogues and "kirkuts" or Jewish cemeteries. After World War II and the extermination of Jews by Nazi invaders, Kazimierz was deserted and fell into ruin. Today thanks to a revival, restored buildings stand alongside those devastated in the past.

Later cross the Vistula River into the district of Podgorze where you can visit places known from "Schindler's List" as well as beautiful landscaped parks. You can visit Schindler's Factory, the Eagle Pharmacy, Bohaterow Ghetto and see what is left of Plaszow concentration camp.

Day 3

Today you can visit Auschwitz-Birkenau Memorial and Museum in Oswiecim on the site of the infamous Auschwitz Concentration Camp. This afternoon visit the Medieval Salt Mines of Wieliczka another "must see" visit while staying in Krakow.

Day 4

Flight Krakow/Belfast

Budapest

The magical city of Budapest was created by the unification of the three cities of Buda, Obuda and Pest in the year 1873. The Hungarian capital offers a fabulous range of places to see and visit including the Fisherman's Bastion, the Royal Palace and the Heroes Square and its famous Opera House.



SAMPLE 4 DAY TOUR

Day 1

Flight from Dublin/Budapest, coach transfer to hotel.

Day 2

Full day sightseeing tour to include Parliament building and the State Opera, National Galley.

Day 3

Morning visit to the Buda Castle Labyrinth. Afternoon visit to Aquaworld Water Theme Park.

Day 4

Free time for a visit of your choice before returning to the airport for flight to Dublin.

ACCOMMODATION



GERAND HOTEL EBEN

This warm and friendly hotel is situated close to the centre. All rooms are ensuite. They also have a tv/video room.

HOTEL POLUS

Three star hotel situated 8km from the centre of Budapest, 134 rooms - doubles, singles, twins, triples. All ensuite. Indoor swimming pool and sauna. .

Prague

A veritable treasury of the arts and architecture... Prague has in its historical centre over 1700 cultural monuments of immense value, hundreds of ancient houses, palaces, churches, old lanes and beautiful gardens. Prague is built on seven hills on the banks of the River Vltava. The famous panorama of Prague Castle is regarded as one of the most enchanting in the world.



CROSS CURRICULAR ACTIVITIES

Bohemia Glass Factory

Visit to the factory to learn about the process of glass blowing and view the craftsmen at work.

Hradcany Castle

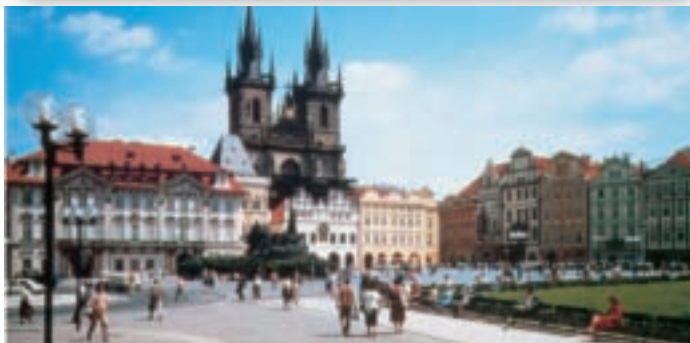
An imposing castle to explore, with changing of the Guard every day at noon. You can also explore the Royal Palace, St George's Basilica and St Vitus' Cathedral.

Museum of Communism

This museum charts the history of Communism from 1921 to 1989 and the Velvet Revolution.

National Gallery

Located in Sternberg Palace, works include Picasso, Brueghel and Durer.



EXCURSIONS

Karlstejn Castle, Konopiste Castle, Karlovy Vary & Marianske Lazne, Kutna Hora, Church of St Barbara and Mint, Bohemia Glass Factory, Nizbor, Pilsner Brewery, Cesky Krumlov

SAMPLE 4 DAY TOUR

Day 1

Flight Dublin/Prague

Day 2

Full day exploring Prague visit Charles Bridge over the River Vltava where you can see the artists at their easels, the proceed to the Old Town Square where you can see the Astrological Clock. You may like to take the little train for a tour of the city and visit the Castle, the largest ancient castle in the World. Or visit the New Town with Wenceslas Square and spend some time shopping.

Day 3

Possible visit to Terezin, a tragic symbol of the suffering of tens of thousands of innocent people who died there during Nazi occupation. Your group may choose to visit the small fortress, the Ghetto Museum, the Magdeburg Barracks and the Crematorium at the Jewish Cemetery.

Day 4

Flight Prague/Dublin

ACCOMMODATION



HOTEL VITKOV, PRAGUE

All rooms in this three star hotel are en suite with single beds, radio and telephone. Buffet Breakfast. Small bar and two meeting rooms. 15 mins by tram from the city centre.

HOTEL RUCZAY

Suited close to the old town. 2/4 bedded rooms en-suite with TV and aircon.

Russia

Russia is the largest country on earth spanning two continents. Since the dissolution of the Soviet Union a new Russia has emerged which celebrates the rich history and culture of this vast nation. Pass beneath the Kremlin Walls and walk around Red Square and admire the beauty of St Basil's cathedral.



SAMPLE 7 DAY TOUR

Day 1

Depart Dublin, flight to Moscow, transfer to hotel for dinner.

Day 2

Morning guided coach tour of Moscow to see some of the major sights. Afternoon visit to the Kremlin followed by a visit to a cathedral.

Day 3

A guided tour of the beautifully decorated metro system. Take a stroll around Red Square with some free time for a visit of your choice. Following dinner, depart on the overnight sleeper train to St Petersburg. Accommodation in four berth compartments.

Day 4

Morning city tour of St Petersburg. Afternoon excursion to Peter & Paul's Fortress.

Day 5

Morning visit to Hermitage Museum followed by a visit to St Isaac's cathedral

Day 6

Free time for last minute visit of your choice. Transfer to airport for flight home.

EXCURSIONS

Moscow

Kremlin, Achievements Exhibition Park, Red Square, Circus, Armoury Museum, Sergiev Posad, former seat of Orthodox church, Opera or Ballet

St Petersburg

Peter and Paul Fortress, Pushkin Palace & Pavlovsk Gardens, St Isaac's Cathedral, Petrodvorets Palace (May to Sept only), Mariinsky or Maly Theatres, The Admiralty, Cruise Aurora, Peter the Great's Cottage

ACCOMMODATION



HOTEL ISMALOVO

Situated to the north east of Moscow, this hotel is made up of four different blocks, totalling 1400 rooms. Rooms are mainly two bedded. Singles incur supplements. All rooms en suite with TV. Large restaurant, bar, shops etc.

HOTEL MOSKVA

This central hotel can be found at the east end of Nevsky Prospekt. There is a metro stop just outside the hotel. All rooms are en suite, normally 2 bedded rooms. Singles would incur supplements, Restaurant, bar, shop.

Rome Venice & Lake Garda

Experience the treasures of Italy... Rome is the hub of Italian cultural and home to great works including Michaelangelo's frescos in the Sistine Chapel. Experience the charm of Venice's St Mark's Square and Doge's Palace or visit Verona, famous for the illfated love affair of Romeo and Juliet.



ROME 4 DAY TOUR

Day 1

Flight Belfast or Dublin to Rome. Possible afternoon visit

Day 2

Morning guided tour of Ancient Rome, including the Colosseum, Roman Forum, Palentine Hill etc. In the afternoon continue to explore Piazza di Spagna, Trevi Fountain and the Pantheon.

Day 3

Full day visit to the Vatican City, visit also the Vatican Museum including the Sistine Chapel and Vatican gardens. In the afternoon take in St Peter's Square, the Basilica and the Vaults.

Day 4

Possible free time before your departure for flight from Rome to Belfast/Dublin



VENICE 4 DAY TOUR

Day 1

Dublin to Milan or Venice. Transfer by coach to your hotel in Lido de Jesolo resort.

Day 2

Coach transfer to Punta Sabbioni to catch the vaporetto to Venice. Guided sightseeing tour of this charming city where you can see St Mark's square, the gondolas and wonderful shops full of Venetian art. Return to hotel in Lido de Jesolo.

Day 3

Depart Lido for Lake Garda. Today your group can visit the towns of Padua and Verona on the way to your hotel in Lake Garda.

Day 4

Full day of fun at Gardaland Themepark (Open end of March to Sept and at weekends in October). Overnight in Lake Garda.

Day 5

Flight Milan/Venice to Dublin.

ACCOMMODATION



HOTEL NOTO

Situated in the Termini area, all rooms are en-suite, TV and aircon.

HOTEL DINA

This hotel is in the heart of Rome, close to Santa Maria Maggiore Church. 2/3 bedded en-suite rooms.

ACCOMMODATION



HOTEL JALISCO - LIDO DE JESOLO

Situated close to the centre and beach this hotel offers 3 or 4 bedded en-suite rooms with air-con and balcony.

HOTEL ALBEROLLO - LAKE GARDA

A lovely hotel close to Riva. Three or four bedded rooms all en-suite. There is also a swimming pool and TV room.

OTHER ATTRACTIONS

The Colosseum

Probably Rome's best know landmark. In the amphitheatre bloody battles between gladiators and ferocious animals were once held.

The Forum

It is located on the via del Fori Imperiali, just a short walk from the Colosseum.

The Pantheon

The Pantheon is the most complete ancient roman structure

Trevi Fountain

The most elaborate fountain in Rome. Don't forget to throw a coin into the fountain over your left shoulder

The Vatican City

Saint Peter's Basilica is the largest and most famous basilica in the world. You can climb the dome for a brilliant view of the city.

Vatican Museums

These museums contain an extraordinary collection of fine art and treasures accumulated by papal leaders. See the spectacular "Creation of the World and Fall of Man" on the ceiling of the Sistine Chapel.



Edinburgh

The beautiful city of Edinburgh offers an endless variety of educational attractions from Dynamic Earth and Edinburgh Castle to the Camera Obscura and Royal Yacht Britannia.

EDINBURGH Attractions



EDINBURGH CASTLE

In its dominating position overlooking the capital city, the grandeur and historical significance of Edinburgh Castle has made it a globally famous icon of Scotland and part of the old and new towns of Edinburgh's World Heritage site. www.edinburghcastle.gov.uk

EDINBURGH BUTTERFLY & INSECT WORLD

Experience a tropical rainstorm, handle tarantulas, snakes and millipedes. Daily occurrences include the Glowing Scorpion Display and the Tropical Gardens. www.edinburgh-butterfly-world.co.uk

ROYAL YACHT BRITANNIA

A visit to the Royal Yacht Britannia will bring history to life for your school group and stimulate their imagination. www.royalyachtbritannia.co.uk

EDINBURGH DUNGEON

The Edinburgh Dungeon invites you to delve into the capital's most blood-curdling history. Live actors, two hair-raising rides, shows and special effects transport you back to those black, bleak times...are you brave enough?

GLASGOW SCIENCE CENTRE

Glasgow Science centre is home to hundreds of interactive exhibits in the Science Mall, Scotland's only Imax cinema, science show theatre and climate change theatre. www.gsc.org.uk

NEW LANARK

You cannot fail to be impressed by the educational opportunities on offer at New Lanark World Heritage site. Three guided active learning sessions are available, Owen's school children, Toys from the past and present and Interactive Gallery sessions. www.newlanark.org

M&DS THEME PARK

Set in 20 acres of the beautiful Strathclyde Country Park. Over 40 major rides and attractions. You can also visit Amazonia, Scotland's only indoor tropical Rainforest (normally opens mid May). www.scotlandsthemepark.com

DYNAMIC EARTH

Travel back in time 15,000 million years and depart on a journey of discovery. Feel the earth move beneath your feet as you encounter erupting volcanoes. The experience is now split into three - Our Dynamic Earth, Discovery Workshops and "We are Astronomers" www.dynamicearth.co.uk

CAMERA OBSCURA

A fascinating and highly amusing way to see the city and learn about its history. Five floors of interactive hands-on fun! In the Magic Gallery you will interact with incredible things like floating sweets, Victorian bendy mirrors and fish that swim on the floor. www.camera-obscura.co.uk

DEEP SEA WORLD

Deep Sea World welcomes you on a spectacular underwater safari. Experience the mystery of the coral reefs, the menace of sharks and the amazing seal sanctuary. www.deepseaworld.com

BLAIR DRUMMOND SAFARI PARK

A day packed with adventure - visit the Wild Animal Reserves, Chimp Island, Lemur Land, Pets Farm, Flying Fox, Giant Astraglide, Bird of Prey Centre and more. www.blairdrummond.com

HUNT FUN TREASURE HUNTS

You and your children will be guided on a walk passing historical buildings, statues and monuments encouraging problem solving, team work, navigation skills and more. www.huntfun.co.uk



Evening Activities

Tenpin Bowling

Fountain Park Tel. 0871 873 2450

Purves Puppets

Hailed to be one of the best puppet companies in the world! Early booking essential. Tel. 01899 220631

Ghost tour

A popular evening tour which takes you on a light-hearted journey into Edinburgh's dark past with a mix of dramatic story-telling. Tel. 0131 557 6464

Theatre

Edinburgh Playhouse

Tel. 0131 524 3301

Festival Theatre

Tel. 0131 529 6005



Edinburgh



ACCOMMODATION



KINGS MANOR HOTEL ***

This very popular hotel situated close to the city centre offers beautiful multibedded ensuite bedrooms. They also have a 20m swimming pool.

AILSA CRAIG HOTEL ***

Just 10 minutes walk from Princes Street, recently refurbished this hotel offers 4/6 bedded ensuite rooms.

HOLIDAY INN EXPRESS DUNFERMLINE ***

A lovely hotel situated 18 miles outside Edinburgh. Mainly twins/triples with ensuite facilities.

HOTEL CLADHAN FALKIRK ***

Situated approximately 40 mins from Edinburgh, this hotel provides comfortable accommodation in 4/6 bedded ensuite rooms.



EDINBURGH 4 DAY TOUR

Day 1

School/Glasgow Science Centre/Edinburgh

Depart school by coach for Belfast/Larne crossing to Scotland and on to Glasgow for a visit to Glasgow Science Museum for some interactive learning and fun.

Day 2

Guided Tour/Edinburgh Castle/Butterfly & Insect World

An official guide will meet the party at hotel for a conducted tour of the city, taking in the major points of interest and including a visit to Edinburgh Castle. Afternoon visit to Edinburgh Butterfly & Insect World, all viewed from an indoor paradise with superb educational facilities.

Day 3

Dynamic Earth/Blair Drummond Safari Park

Morning visit to Dynamic Earth, travel back in time 15000 million years on a journey of discovery. You can choose to have a workshop or visit "We are astronomers" a 360 degrees dome film. Afternoon visit to Blair Drummond Safari Park.

Day 4

Museum of Scotland/Stranraer to School

Morning visit to the new Museum of Scotland ranging from the early history of Scotland to a 20th century gallery which will include many interactive displays and computer screens. Depart Edinburgh for your journey to Stranraer/Cairnryan and coach to school.

Glasgow

Glasgow offers something for everyone, its industrial heritage, stunning architecture and wonderful parklands.

Evening Activities

XSCAPE – BRAEHEAD

Snow slope, rock climbing, adventure golf, bowling, laser games and cinema
www.xscape.co.uk/braehead

HOLLYWOOD BOWL, GLASGOW

Showcase Leisure Park, Barrbridge Road, Glasgow G69 7TZ Tel. 01236 425 222

THEATRE ROYAL GLASGOW

282 Hope Street
Glasgow G2 3QA Tel. 0141 332 9000



ATTRACTIONS

VIKINGAR

You will be enthralled by the saga of the Vikings in Scotland. Experience the Viking adventure first hand as you are guided through 500 years of history. Vikingar also boasts a 25m swimming pool. www.naliesure.co.uk

M&D's THEME PARK

Set in 20 acres of beautiful Strathclyde Country Park, packed with rides and attractions to suit all age groups (seasonal opening) www.scotlandsthemepark.com

AMAZONIA

Scotland's only indoor Tropical rainforest, packed with loads of exotic animals (open all year). www.scotlandsthemepark.com

PLAY DROME

The Play Drome complex offers a wide range of facilities including a large swimming pool with wave machine and waterslides www.wdcweb.info

KELBURN COUNTRY PARK

Enjoy a ranger guided tour of the Estate. You can also explore the Giant's Castle, enter the secret grotto and lose yourself in Maze of the Green Man or challenge yourself on the adventure course. www.kelburnestate.com

LOUDOUN CASTLE

Your day out will be packed with laughs, screams, twists, drops, splashes, thrills and spills (seasonal opening) www.loudouncastle-online.co.uk

CLIMBZONE

Fancy something different? You can choose various activities including Rock Climbing on one of the largest freestanding climbing walls on the UK or Skypark, state of the art aerial adventure course. www.climbzone.co.uk

HUNT FUN TREASURE HUNTS

You and your children will be guided on a walk passing historical buildings, statues and monuments encouraging problem solving, team work, navigation skills and more. www.huntfun.co.uk

ACCOMMODATION



PREMIER INN, CHARING CROSS ***

This hotel offers great accommodation in the heart of the city. Ensuite triple rooms for children.

HOLIDAY INN EXPRESS ***

This hotel is situated at the airport, triple and twin rooms

BUDGET ACCOMMODATION

NEW LANARK YOUTH HOSTEL ***

This hostel offers great accommodation. Rooms are mainly 4-bedded ensuite. Good value for money!

STIRLING YOUTH HOSTEL

A fabulous youth hostel which offers ensuite 4-6 bedded rooms.

GLASGOW 3 DAY TOUR

Day 1

School to New Lanark

Depart school by coach for Belfast/Larne and sailing to Scotland. Afternoon visit to New Lanark. The fascinating history of the village is brought to back to life. One highlight of your visit will be the fascinating "Annie McLeod experience" Ride where a ghost of a mill girl appears and takes you on a journey.

Day 2

Glasgow Science Centre/Scotland Street School Museum

Morning visit to the Glasgow Science Centre to visit the Science Mall, with its three floors packed with interactive science and technology exhibits. Followed by a science workshop or a visit to the Imax. Afternoon visit to Scotland Street School. Designed by Charles Rennie Mackintosh, it tells the story of Education in Scotland over a hundred years...see what school days were like in the reign of Queen Victoria.

Day 3

Time Capsule/Coach to school

Fun, flumes and a lazy river await you this morning at the Time Capsule. Return to Scottish port for return sailing to Belfast/Larne

Stirling



STIRLING 4 DAY TOUR

Day 1

School to Vikingar/Stirling

Depart school by coach for Belfast/Larne crossing to Scotland and on to Largs for a visit to Vikingar, the story of the Vikings in Scotland.

Day 2

Wallace Monument/Glasgow Science Centre

Morning visit to Wallace Monument to meet William Wallace, the inspiration for Braveheart and other famous Scots in the hall of heroes. This is followed by a visit to Glasgow Science Centre. Prepare to be intrigued and challenged with over 300 hands-on exhibits in the Science Mall.

Day 3

Stirling Castle/Safari Park

Morning visit to Stirling Castle, without doubt the grandest of all Scottish castles, both in situation and architecture. Afternoon visit to Blair Drummond Safari Park. Drive amongst wild animals, performing sea lions, boat safari and chimpanzee island and adventure playground.

Day 4

Scotland Street School/Coach to school

Morning visit to Scotland Street School for a fascinating glimpse into the past. See what school days were like in the reign of Queen Victoria.

ACCOMMODATION



STIRLING YOUTH HOSTEL

Built behind the façade of an historic church, this lovely hostel offers great 4/5 bedded ensuite rooms.

KING ROBERT HOTEL ***

Lovely hotel situated on the site of the historic Battle of Bannockburn. All rooms ensuite and multibedded.

Evening Activities

MARINER CENTRE

Swimming
Tel. 01324 503 750

AMF BOWLING STIRLING

Tel. 0870 118 3033

CINEWORLD, FALKIRK

Tel. 0871 200 2000

Liverpool



LIVERPOOL 3 DAY TOUR

Day 1

Flight to Liverpool/World Museum/Beatles Story

Morning visit to the World Museum which combines historic treasures from across the globe with the latest interactive technology. Afternoon visit to the award-winning Beatles Story. A unique attraction that will transport you on an exciting and atmospheric journey into the life, times, culture and music of the Beatles.

Day 2

Knowsley Safari Park/Liverpool FC

Morning visit to Knowsley Safari Park which has around 30 species of mammal roaming the 200 hectares of land. Afternoon visit to Liverpool Football Club.

Day 3

World of Glass/Return flight

Morning visit to the World of Glass, an award-winning attraction. Enjoy glass-blowing, over 30 stunning displays and an amazing special effects film show. Return to airport for flight to Belfast.

ACCOMMODATION



LIVERPOOL YOUTH HOSTEL

A lovely hostel offering all ensuite multi bedded rooms.

RAMADA ENCORE WARRINGTON

A new stylish hotel offering superb 2/3 bedded ensuite rooms.
www.encorewarrington.co.uk

BRITANNIA HOTEL WIGAN

Situated approximately 30 mins from Liverpool, this hotel offers simple accommodation in 2/3 bedded ensuite rooms.

Evening Activities

EUROPA POOLS BIRKENHEAD

Leisure pool with lagoon offering an exciting range of water features including two breathtaking water flume rides.
Tel. 0151 647 4182

MEGABOWL CHESHIRE OAKS

Tel. 0151 356 5100

VUE CINEMAS CHESHIRE OAKS

Tel. 0871 224 0240

GHOST TOUR

SHIVERPOOL GHOST TOURS
Tel. 0151 709 2030

HOLLYWOOD BOWL

Tel. 0151 228 1048

ATTRACTIONS

JORVIK

A school visit to Jorvik offers the authentic Viking encounter for pupils, as well as being a cross-curricular learning experience. You can also upgrade your education visit to include DIG for a tour and workshop. www.vikingjorvik.com

NATIONAL COAL MINING MUSEUM

Students have the chance to visit one of only two real mines left open within Britain and ride the cage 140m underground! www.ncm.org.uk

YORK DUNGEON

The York Dungeon invites you to delve into the city's most blood-curdling history. Live actors, shows and special effects transport you back to those black, bleak times...are you brave enough? www.thedungeons.co.uk

MANCHESTER THEATRE OF DREAMS

The Theatre of Dreams tour includes the history of the football club, the hall of fame, the trophy room, the changing room and the pitch! www.manutd.com

NATIONAL RAILWAY MUSEUM

Embark on a journey into the past and discover the story of the train at the National Railway Museum. www.nrm.org.uk

FLAMINGOLAND

Flamingoland has rides and attractions for everyone including a triple loop rollercoaster and a new water ride! www.flamingoland.co.uk

BARLEY HALL

A superb re-creation of a late medieval townhouse. It is a hands-on experience and you can even try on medieval costumes! www.barleyhall.org.uk

EDEN CAMP

You will experience the sights, sounds and even smells of wartime Britain in the huts of an original Prisoner of War Camp. www.edencamp.co.uk

MAGNA CENTRE/ROTHERHAM

A visit to Magna provides an exciting learning environment where pupils can explore science and technology in the world around us. www.visitmagna.co.uk

YORKSHIRE AIR MUSEUM

An impressive collection of aircraft based on an authentic WWII Bomber Command Station. www.yorkshireairmuseum.co.uk

YORK MINSTER

York Minster was started in the Thirteenth century and is the largest cathedral in Britain and contains a considerable amount of Medieval stained glass. www.yorkminster.org

YORK CASTLE MUSEUM

Experience life as a Victorian. Take a journey through six hundred years of life in York. www.yorkcastlemuseum.org.uk

EUREKA! THE NATIONAL CHILDREN'S MUSEUM

Everything at Eureka! has been designed to inspire children to find out about themselves and the world around them through 100s of hands-on exhibits. www.eureka.org.uk

HUNTFUN YORK TREASURE HUNT

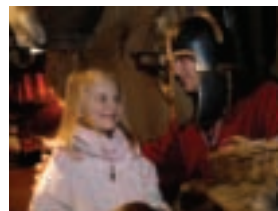
You and your children will be guided on a walk passing historical buildings, statues and monuments encouraging problem solving, team work, navigation skills and more. www.huntfun.co.uk

MOTHER SHIPTON'S CAVE/KNARESBOROUGH

The cave and the famous Petrifying Well form part of a mile long wooded riverside park. www.mothershiptonscave.com

THACKRAY MUSEUM LEEDS

This award winning museum offers a fun and lively visit. From a Victorian operating theatre to the wonders of modern surgery, the museum's galleries, collections and interactive displays bring to life the history of medicine. www.thackraymuseum.org



Evening Activities

WATERWORLD

Surf the waves, ride the slides and float in the lazy river. Open Wednesday night to 2000 hours www.waterworldyork.co.uk

GHOST TOUR

Haunted Walk of York
Tel. 01904 621003

TENPIN BOWLING YORK

Tel. 08712 240240

VUE CINEMA

Tel. 08712 240240

THEATRE ROYAL

Tel. 01904 623568

OLYMPIA BOWLING/SCARBOROUGH

Tel. 01723 377 960
www.olympiascarborough.co.uk

SCARBOROUGH GHOST TOUR

Tel. 01347 848 445

York



YORK 4 DAY TOUR

Day 1

School to York

Depart school by coach for Belfast/Larne crossing to Scotland and on to York.

Day 2

Guided Tour/Castle Museum/Jorvik

Morning guided tour of York with guide followed by visit to York Castle Museum with its famous Victorian street. Afternoon visit to Jorvik Viking Centre.

Day 3

Eden Camp/The Deep

Morning visit to this unique museum which will transport you back to wartime Britain. Afternoon visit to the world's only Submarine. Take a dramatic journey into the future and a travel to the murky depths of the great ocean floor.

Day 4

Railway Museum/School

Morning visit to the railway museum before commencing by coach for Scottish port and coach to school.

Scarborough



SCARBOROUGH 4 DAY TOUR

Day 1

School to Scarborough

Depart school by coach for Belfast/ Larne crossing to Scotland and onward to Scarborough.

Day 2

Guided Tour/Castle Museum/Jorvik

Morning guided tour of York, followed by visit to York Castle Museum with its famous Victorian street. Afternoon visit to Jorvik Viking Centre.

Day 3

North Yorkshire Moors Railway/Eden Camp

This morning we catch the train to Goatland where you can see the station that was used in the film 'Harry Potter and the Philosophers Stone' and visit the town of Goatland which is used to film 'Heatbeat'. Afternoon visit to Eden Camp a unique museum which will transport you back to Wartime Britain.

Day 4

Shopping/School

Free time for last minute shopping before departing for Scottish port and coach to school.



Want to fly?

These tours can be operated with flights to Liverpool.



ACCOMMODATION



THE ELMBANK HOTEL

With 72 bedrooms this city hotel with a country house atmosphere is full of character and charm where a warm and friendly welcome awaits you. Groups are accommodated in twin rooms. All rooms are en suite with TV. www.elmbankhotel.com

DAYS INN

A lovely new hotel, close to York, all ensuite rooms, mainly twin bedded www.daysinn.com

YORK PAVILION

This hotel offers beautiful accommodation for smaller groups (maximum 35) all rooms are ensuite. www.yorkpavillion.com

QUALITY HOTEL/LEEDS/SELBY

Great hotel situated about 45 minutes from York. All en suite bedrooms, mainly 2/3 bedded. Hotel also has a swimming pool.

LYSANDER HOTEL/SCARBOROUGH

A small friendly hotel suitable for groups of 35 maximum. A very warm and welcoming hotel with wonderful food. All rooms are en-suite. www.lysanderhotel.co.uk



London



THE CHOICE IS YOURS
we will tailor make
your London Tour!

Madame Tussauds
LONDON
Who do you want to meet?

Other Excursions

Science Museum, St Paul's Cathedral,
Tower of London, BBC Experience,
London Dungeon, Tower Bridge
Experience

SAMPLE 3 DAY TOUR

Day 1

Flight to London, guided tour

Depart Belfast, flight to London, transfer to coach travel to central London. Coach remains with you on tour. Afternoon general sightseeing tour of the city which will give you a wonderful introduction to this fabulous city.

Day 2

London Eye/Madame Tussaud's

Morning visit to the London Eye for a bird's-eye view of the city. Followed by a visit to Madame Tussaud's where you can experience the glittering world of fame. Hop into a black cab and take a journey back in time or race against your friends with Lewis Hamilton.

Day 3

Science Museum, return flight

Morning visit to the Science Museum. Coach to airport, return flight to Belfast.

London is a vibrant city steeped with tradition and heritage, with its traditional sights, famous landmarks such as the London Eye, Millennium Bridge, Tower of London and Big Ben. It offers the best selection of museums, galleries and national collections in the world should you be organising a cultural, business studies, media, art or drama tour – London has it all!

Cross Curriculum Excursions

London Eye

Bring London to life with a flight on the London Eye. Astonish, amaze, and excite pupils with an incredible perspective of London.

Wembley Stadium

Go "behind-the-scenes", walk in the footsteps of legends, feel the magic, sense the history in the England changing rooms, experience the tension of the players tunnel, climb the sacred Trophy winner's steps!

Madame Tussaud's

Experience the glittering world of fame – hop into a black cab and take a journey back in time or race against your friends with Lewis Hamilton.

London Dungeon

The dungeon invites you to delve into the capital's most blood-curdling history. Live actors, two hair-raising rides, shows and special effects transport you back to those black, bleak times...are you brave enough?

London

ATTRACTIONS

BUSINESS & ECONOMICS

Bank of England

This tour is aimed at A Level Economics and GNVQ Business Studies. Your visit will start with a one-hour presentation giving a brief history of the Bank of England since its foundation in 1694. Questions are invited on all aspects of the Bank and its functions both past and present. Following which you can visit the Museum with its collection of gold bars, coins, notes and award-winning interactive systems.

Coca-Cola Education Centre

A two and a half hour tour enables students to watch and learn about the complete process of production from raw material to distribution (maximum 25 persons per tour).

London Stock Exchange

"Inside the Markets Programme" uses "live market fees" so participants can experience trading activity. The courses are available in two-hour, half day or full day sessions.

Tower Bridge Experience

One of the finest, most recognisable bridges in the world. You can enjoy breathtaking views from the high-level walkways and learn how it was built. Visit the Victorian Engine Rooms, home to the original steam engines that used to power the bridge. Presentations can be made on a variety of Business Studies topics.



HISTORY

Tower of London

Founded by William the Conqueror, the Tower of London holds some remarkable stories. Despite a grim reputation as a place of torture and death, it has been a palace, a prison and a treasury. Today it houses the Crown Jewels.

HMS Belfast

The largest surviving example of Britain's twentieth century naval power which is now moored between Tower and London Bridge. Explore the many decks, view the Captain's Bridge to the Boiler and Engine Rooms.

Imperial War Museum

The Imperial War Museum is unique in its coverage of conflicts from the First World War to present day. It seeks to provide for and to encourage, the study of modern war and war time experiences.

Natural History Museum

The Natural History Museum is a world class resource for learners. The museum aims to help people enjoy the natural world and develop their scientific knowledge and understand the impact of science on their lives. The museum's learning programme has been awarded the Learning Outside the Classroom quality badge.

Other Historical attractions

Windsor Castle, Churchill War Rooms, HMS Belfast, London Dungeons.



LONDON ART

Tate Modern

Britain's National Museum of Modern Art. The gallery displays the world famous Tate collection of international modern and contemporary art which includes works by Matisse, Picasso, Rothko, Richard Deacon, Emma Kay and Gerhard Richter.

National Gallery

A "must" for any art loving student. A huge display of western paintings including works by Botticelli, Da Vinci, Rembrandt, Gainsborough and Van Gogh

Victoria & Albert Museum

One of the largest museums of art and design in the world and full of artefacts of the world's richest cultures. Immerse your students in history, design, theatre and performance. See period designs, prints and designs by famous artists including Da Vinci and James Dyson.

British Museum

The imposing British Museum exhibits the works of man from prehistoric to modern times. Famous objects include the Rosetta Stone and the Portland Vase.

Other Art visits

Tate Britain, St Paul's Cathedral.

Alton Towers

Escape to the Alton Towers Resort and experience if you dare, TH13TEEN the amazing new rollercoaster. The ultimate world-first ride launched in 2010 and includes the world's first free fall drop! Experience the unexpected upon the latest exhilarating rollercoaster which joins a long line of world first attractions at the Alton Towers Resort including "Nemesis", "Oblivion" and "Air". With an amazing combination of adrenalin inducing rides and attractions, the Alton Towers Resort is the ultimate day out. Join Charlie on his amazing journey through Willy Wonka's Chocolate Factory, Explore the hidden shipwreck of underwater fun, Sharkbait Reef by SEA LIFE located in the pirate-themed Mutiny Bay, and come face to face with creatures from the deepest depths of the World's seas and oceans. Cloud Cuckoo Land, an area full of fantabulous fun is especially for our younger guests, featuring live entertainment and characters, fantastic indoor soft play facilities and surprises at every turn.



2 DAY TOUR

Day 1

Flight/Alton Towers Resort

Early morning flight to Liverpool
Coach to Alton Towers Resort for a full day visit. Overnight hotel.

Day 2

Football Stadium Tour

Morning visit to Manchester Utd FC or Liverpool FC for a stadium tour. Return to airport for flight to Belfast.

DAY TRIP

Early morning flight Belfast/Liverpool, coach transfer to Alton Towers Resort for an action packed day. Coach transfer to Liverpool Airport for return flight to Belfast.

ACCOMMODATION



BRITANNIA WIGAN HOTEL

A very welcoming hotel for groups. 2/3 bedded ensuite rooms.

PARK INN

This new hotel offers fabulous accommodation. All rooms are air-conditioned. 2/3 bedded ensuite rooms.

Manchester

ATTRACTIONS

CATALYST WIDNES

The centre offers a unique interactive experience which explores the science and technology behind the chemical industry and its impact on our lives past and present through a host of "hands-on" exhibits. www.catalyst.org.uk

IMPERIAL WAR MUSEUM NORTH

This award-winning Museum and its stunning displays provide a unique learning experience which will enrich their understanding of history and bring the subject matter to life. <http://north.iwm.org.uk/>

EUREKA!

Everything at Eureka has been designed to inspire children to find out about themselves and the world around them through 100s of "hands-on" exhibits. www.eureka.org.uk

LEGOLAND® DISCOVERY CENTRE

Explore the educational activities and attractions inside the biggest box of Lego. Its an educational journey into the imagination. www.legolanddiscoverycentre.co.uk

GREATER MANCHESTER POLICE MUSEUM

Take a look into Manchester's past – a dark place, full of alleys, gas lamps – explore the tiny cells and take a rest on a cell bed. www.gmp.police.uk



Evening Activities

HYDE LEISURE POOL

Tel. 0161 609 1260

MANCHESTER CLIMBING CENTRE

Climbing is a great way to develop fitness, teamwork and communication skills in an enjoyable and exhilarating environment. Tel. 0161 230 7006 <https://manchesterclimbingcentre.com>

PARADISE ISLAND ADVENTURE GOLF/TRAFFORD CENTRE

Tel. 0161 202 9544 www.paradiseislandgolf.com

TEN PIN BOWLING/DIDSBURY

Tel. 0871 873 3150

HOLLYWOOD BOWL

Tel. 0161 343 8777 www.hollywoodbowl.co.uk



MANCHESTER 4 DAY TOUR

Day 1

School to hotel

Depart school by coach for Belfast/Larne crossing to Scotland and onward to Manchester.

Day 2

Lowry/Old Trafford

Morning visit to the Lowry for an Art & Design Workshop
Afternoon visit to Manchester United Museum and Tour Centre where you can see the stadium through the eyes of Manchester United greats themselves.

Day 3

Alton Towers Resort

Full day visit to Alton Towers Resort. Experience the unexpected upon the Ultimate rollercoaster TH13TEEN, which will join a long line of world first attractions at the Alton Towers Resort including "Nemesis", "Oblivion" and "Air".

Day 4

Museum of Science/Home

Award winning Museum where you can get your hands on the exhibits before departing Manchester for journey to Scottish port and coach to school.

ACCOMMODATION



BRITANNIA WIGAN HOTEL

A very welcoming hotel for groups. 2/3 bedded ensuite rooms.

PARK INN

This new hotel offers fabulous accommodation. All rooms are air-conditioned. 2/3 bedded ensuite rooms.

North Wales & Chester

ATTRACTIONS

PILI PALAS NATURE WORLD

Pili Palas represents an experience which will be both informative and enjoyable. It will encourage a greater understanding of the environment and its natural history. Butterfly House, Reptile House, Ant Avenue, Creepy Crawley Cavern, Terrapin Pond, Adventure Play area, Nature Trail, Wildlife Pond and Education Centre. www.pilipalاس.co.uk

LLECHWEDD SLATE CAVERN

Two spectacular underground tours to explore the underground world of the Victoria Slate Miner. The Temperature in the mines is about 54F throughout the year, making the caverns an ideal visit come rain or shine. www.llechwedd-slate-caverns.co.uk

WELSH MOUNTAIN ZOO

Set high above Colwyn Bay with panoramic views and breathtaking scenery, these beautiful gardens are home to our caring conservation zoo. Enjoy the Penguin Parade, Chimp Encounter, New Condor Have and the Children's Farm. www.welshmountainzoo.org

GREAT ORME TRAMWAY

Lovingly restored – re-live the experience of more than 100 years ago in the original tramcars. An engineering marvel of its age and it's still the only cable-hauled tramway still operating on British public roads. www.greatormetramway.com

SEAQUARIUM

Seaquarium offers an underwater voyage of discovery, where you can experience aquatic life from several regions of the world including the Amazon, the Pacific Ocean, the Indian Ocean, the Red Sea and from our own shores around Britain. www.seaquarium.co.uk

ALICE IN WONDERLAND CENTRE

Take an indoor walk through Wonderland Rabbit Hole with life-sized animated displays of some of the most colourful and well known scenes from the Alice Story. Tel. 01492 860 082

FFESTINIOG RAILWAY

Travel by steam hauled narrow gauge train through the breathtaking scenery of the Snowdonia National Park between Porthmadog and Blaenau Ffestiniog. www.festrail.co.uk

CHESTER ZOO

A visit to Chester Zoo is like taking a trek around the world with its unrivalled collection of animals and glorious gardens. www.chesterzoo.org

ALTON TOWERS

Escape to the Alton Towers Resort and experience if you dare, TH13TEEN the amazing new rollercoaster. The ultimate world-first ride launched in 2010 and includes the world's first free fall drop! Experience the unexpected upon the latest exhilarating rollercoaster which joins a long line of world first attractions at the Alton Towers Resort including "Nemesis", "Oblivion" and "Air". With an amazing combination of adrenalin inducing rides and attractions, the Alton Towers Resort is the ultimate day out www.altontowers.com

RHYL SUN CENTRE

Ride the rapids, descend over 300 feet on the Buzz, dare to ride the Black Hole or simply enjoy the Lagoon Pool with tropical storms, thunder and lightning. Check website for opening times. www.rhylsuncentre.co.uk

CAERNARFON CASTLE

Caernarfon Castle is one of the most impressive of the castles built by Edward 1 and is one of Europe's greatest medieval fortresses.

GREENWOOD FOREST PARK

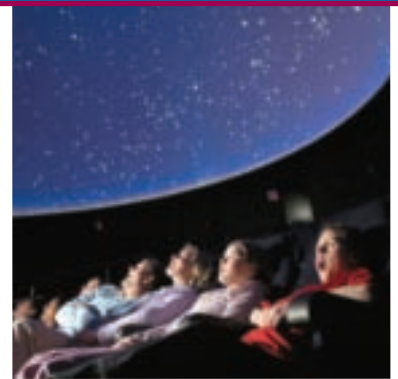
Take a ride on our eco-friendly Green Dragon Rollercoaster and zoom down the 70 m sledge run – the longest in Wales. Embark on a Jungle Boat Adventure before bouncing along to the big bouncy Giant Jumper. www.greenwoodforestpark.co.uk

HARLEQUIN PUPPET THEATRE

The first permanent theatre to be built in Britain solely for puppet playing, the Harlequin opened in 1958 when it won the Civic Trust Award for its design. Performances last for an hour and a half with the content tailored to the age of your group. Evening visits possible. www.puppets.uk.com

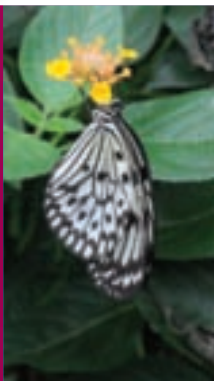
SPACEPORT

Blast off on a virtual journey through space and time at the amazing space-themed attraction at Seacombe Ferry Terminal. Become a virtual astronaut in the incredible 360 degree, fully immersive Space Dome show where the latest production, Astronaut, will take you from Earth to space...and beyond! www.spaceport.org.uk



Llandudno

Chester



LLANDUDNO 4 DAY TOUR

Day 1

School to Llandudno

Depart school by coach for early morning sailing from Dublin or Dun Laoghaire to Holyhead. Afternoon visit to Pili Palas Butterfly World for a guided tour and talk and then on to Llandudno for check-in.

Day 2

Welsh Mount Zoo/Seaquarium

Morning visit to the Welsh Mountain Zoo, followed by a visit to the Seaquarium with over 30 exhibits and choice of presentations on Rockpools, Rays, Sharks or Pollution.

Day 3

Guided tour of Chester/Europa Pools

Morning visit to Chester for a guided walking tour with a Roman Soldier. In the afternoon you will enjoy the exciting range of water features and breathtaking water flumes, the wave pool, geysers and water cannons.

Day 4

Greenwood Forest Park/School

Morning visit to Greenwood Forest Park. Discover what the "greenhouse effect" really is, visit the rainforest, experience life in the desert and test your sense of touch. Ferry from Holyhead to Dublin or Dun Laoghaire and coach to school.



CHESTER 4 DAY TOUR

Day 1

School to Chester

Depart school by coach for early morning sailing from Dublin/Dun Laoghaire to Holyhead. Afternoon visit to Pili Palas Butterfly World for a guided tour and talk and then onto Llandudno for check-in.

Day 2

Roman Soldier/Spaceport

Depart after breakfast to meet your Roman Soldier Guide for a tour of the city walls. Afternoon visit to Spaceport the ultimate learning experience through time and space.

Day 3

Alton Towers Resort

Escape to the Alton Towers Resort and experience if you dare, TH13TEEN the amazing new rollercoaster. The ultimate world-first ride launched in 2010 and includes the world's first free fall drop! Experience the unexpected upon the latest exhilarating rollercoaster which joins a long line of world first attractions at the Alton Towers Resort including "Nemesis", "Oblivion" and "Air".

Day 4

Greenwood Forest Park/School

Morning visit to Greenwood Forest Park. Discover what the "greenhouse effect" really is, visit the rainforest, experience life in the desert and test your sense of touch. Experience the thrill of riding on the world's first ever man powered "eco" roller coaster. Ferry from Holyhead to Dublin or Dun Laoghaire, coach to school.

ACCOMMODATION



WARWICK HOTEL

Ideal small party hotel where groups are given a warm personal welcome by Nerys and Glenn. The décor is in keeping with the style of the building. Rooms are en-suite and have TV and Satellite. www.warwickhotel.net

MIN Y DON HOTEL

Min Y Don Hotel is situated on the North Parade seafront. The hotel is comfortably furnished and has en-suite facilities and excellent cuisine. www.minydon-llandudno.co.uk

AMBASSADORS HOTEL

A lovely hotel situated on the promenade, three or four-bedded en-suite rooms. www.hotelambassadors.co.uk

ACCOMMODATION



WOODHEY HOUSE HOTEL

A lovely hotel situated in rural surroundings between Chester & Liverpool. Three or four bedded rooms all en-suite. www.woodheyhouse-hotel-chester.com

HOLIDAY INN RUNCORN

This hotel close to Liverpool Airport, is a very modern hotel offering 2 or 3 bedded en-suite rooms. www.holidayinn.com

WANT TO FLY?

This tour can be operated with flights to Liverpool 

Evening Activities

Coliseum Leisure Park/Cheshire Oaks
Tenpin Bowling
Tel. 0871 550 1010

Vue Cinema
Tel. 0871 224 0240

Northgate Arena/Swimming
Tel. 01244 380 444

Ghost Tour/Liverpool Shiverpool Tours
Tel. 0151 709 2030

Ghost Tour/Chester
Tel. 01244 405 626

Evening Activities

Superbowl Llandudno
Tel. 01492 871 349

Alice in Wonderland Centre
Tel. 01492 860 082

Harlequin Puppet Theatre
Tel. 01492 548 166

Nottingham



NOTTINGHAM 4 DAY TOUR

Day 1

Flight/Leeds Armouries

Morning flight from Belfast International to Leeds Bradford, followed by a visit to Leeds Armouries, before you travel to Nottingham.

Day 2

Tales of Robin Hood/Galleries of Justice

Morning visit to Tales of Robin Hood described as "the world's greatest medieval adventure". This is your chance to relive life in Robin Hood's day. Afternoon visit to The Galleries of Justice, feel what it is like to work on a treadmill, dress in prison uniform and be photographed as a criminal.

Day 3

Alton Towers

Escape to the Alton Towers Resort and experience if you dare, TH13TEEN the amazing new rollercoaster. The ultimate world-first ride launched in 2010 and includes the world's first free fall drop! Experience the unexpected upon the latest exhilarating rollercoaster which joins a long line of world first attractions at the Alton Towers Resort including "Nemesis", "Oblivion" and "Air".

Day 4

Manchester Utd FC Museum & Tour Centre/Flight Home

Depart by coach for a visit to Manchester United Museum and for a tour of the theatre of dreams. Afternoon/evening flight from Leeds/Bradford to Belfast International.

Northumbria



NORTHUMBRIA 4 DAY TOUR

Day 1

School to Housestead Fort

Depart school by coach for Belfast/Larne crossing to Scotland and on to Housestead Roman Fort for a visit.

Day 2

Beamish/Wet 'n' Wild

Visit to Beamish Open Air Museum where the past comes to life. Early 1900 town, colliery, working farm and railway station, travel by tram and period bus. Early evening visit to Wet 'n' Wild where you can venture on the 'hurricane' or try an hilarious raft ride.

Day 3

Life Science Centre/Alnwick Castle

Morning visit to Life Science Centre. If your curious about the world around you, you'll love Life. Life delivers one of the biggest 'hands-on' science education programmes in Europe (workshops are additional). Afternoon visit to Alnwick Castle.

Day 4

Hotel to School

Morning free with opportunity to visit the Metro Shopping Centre and MetroLand, an indoor theme park. Return journey to Scottish port and coach to school.

ACCOMMODATION



PARK INN ***

Situated very close to the city centre, a very modern hotel offering quality en-suite rooms. www.parkinn.co.uk/hotel-nottingham

DAYS HOTEL

In the heart of the city, quality en-suite rooms <http://days-hotel-nottingham>.

Evening Activities

AMF Bowling
Tel 0844 826 3025

Namco Funscape
Tel 0191 406 1066

Empire Cinema
08714 714 714



ACCOMMODATION



QUALITY HOTEL BOLDON/SUNDERLAND

Quality Hotel Boldon is a modern hotel, all 84 bedrooms are extremely. www.qualityinn.com

Evening Activities

AMF Bowling
Tel 0870 118 3026

Tenpin Bowling
Tel 0871 873 2450



Blackpool

Bath



BLACKPOOL 4 DAY TOUR

Day 1

School/Rheged

Depart school by coach for Belfast/Larne crossing to Scotland, onward to Rheged the village in the hills. Europe's biggest grass covered buildings housing five attractions. Your visit will include two attractions.

Day 2

Full Day Activity

Full day multi activity including sailing, windsurfing, raftbuilding, kayaking and bellboating (Maximum 48 children).

Day 3

Blackpool Pleasure Beach

Full day excursion to the famous Pleasure Beach, there is something for every age. Beaver Creek Childrens Theme Park through to the extreme white knuckle experiences of the Pepsi Max and Valhalla or Bling.

Day 4

Sealife Centre/School

Morning visit to the watery world of all things marine where you can even come face to face with sharks in this state of the art aquarium.

ACCOMMODATION



CAROUSEL HOTEL ***

A very welcoming, friendly hotel. All en-suite 2 or 3-bedded rooms. www.blackpool-carousel-hotel.com



BATH 3 DAY TOUR

Day 1

Flight to Bristol/Roman Baths

Afternoon guided tour of the Roman Baths, a World Heritage Site and Britain's only hot spring. Meet the Roman costumed characters and hear the stories of those who worked here 2000 years ago.

Day 2

At Bristol

Full day visit to At Bristol for a journey through animation past and present and become an animator for the day. Be awed by icy bodies and cosmic rays, get in a spin at the turbulent orb, create your own TV show or cover yourself from head to toe in a giant bubble!

Day 3

Adventure & Wildlife Park/Return flight

The park fuses fun and education to provide an appreciation of the natural world. Return to the airport for your return flight to Belfast.

ACCOMMODATION



HOLIDAY INN NORTH

Situated 15 minutes from central Bristol. Lovely hotel offering 2 or 3-bedded en-suite rooms.

Calendar 2011

JANUARY

Wk	M	T	W	T	F	S	S
1						1	2
2	3	4	5	6	7	8	9
3	10	11	12	13	14	15	16
4	17	18	19	20	21	22	23
5	24	25	26	27	28	29	30
6	31						

FEBRUARY

Wk	M	T	W	T	F	S	S
6	1	2	3	4	5	6	
7	7	8	9	10	11	12	13
8	14	15	16	17	18	19	20
9	21	22	23	24	25	26	27
10	28						

MARCH

Wk	M	T	W	T	F	S	S
10	1	2	3	4	5	6	
11	7	8	9	10	11	12	13
12	14	15	16	17	18	19	20
13	21	22	23	24	25	26	27
14	28	29	30	31			

APRIL

Wk	M	T	W	T	F	S	S
14					1	2	3
15	4	5	6	7	8	9	10
16	11	12	13	14	15	16	17
17	18	19	20	21	22	23	24
18	25	26	27	28	29	30	

MAY

Wk	M	T	W	T	F	S	S
18						1	
19	2	3	4	5	6	7	8
20	9	10	11	12	13	14	15
21	16	17	18	19	20	21	22
22	23	24	25	26	27	28	29
23	30	31					

JUNE

Wk	M	T	W	T	F	S	S
23			1	2	3	4	5
24	6	7	8	9	10	11	12
25	13	14	15	16	17	18	19
26	20	21	22	23	24	25	26
27	27	28	29	30			

JULY

Wk	M	T	W	T	F	S	S
27					1	2	3
28	4	5	6	7	8	9	10
29	11	12	13	14	15	16	17
30	18	19	20	21	22	23	24
31	25	26	27	28	29	30	31

AUGUST

Wk	M	T	W	T	F	S	S
32	1	2	3	4	5	6	7
33	8	9	10	11	12	13	14
34	15	16	17	18	19	20	21
35	22	23	24	25	26	27	28
36	29	30	31				

SEPTEMBER

Wk	M	T	W	T	F	S	S
36					1	2	3
37	5	6	7	8	9	10	11
38	12	13	14	15	16	17	18
39	19	20	21	22	23	24	25
40	26	27	28	29	30		

OCTOBER

Wk	M	T	W	T	F	S	S
40					1	2	
41	3	4	5	6	7	8	9
42	10	11	12	13	14	15	16
43	17	18	19	20	21	22	23
44	24	25	26	27	28	29	30
45	31						

NOVEMBER

Wk	M	T	W	T	F	S	S
45	1	2	3	4	5	6	
46	7	8	9	10	11	12	13
47	14	15	16	17	18	19	20
48	21	22	23	24	25	26	27
49	28	29	30				

DECEMBER

Wk	M	T	W	T	F	S	S
49					1	2	3
50	5	6	7	8	9	10	11
51	12	13	14	15	16	17	18
52	19	20	21	22	23	24	25
1	26	27	28	29	30	31	

Travel Insurance

Ferryhill Travel are pleased to provide you with extensive insurance cover arranged through travel insurance specialists Fogg Travel Insurance Services Ltd and underwritten by Union Reisersicherung AG (URV), and are authorised and regulated by the FSA.

The insurance package that we have specially arranged with Fogg Travel includes cover for those activities organised by Ferryhill Travel as shown within this brochure.

Ferryhill Travel consider it is essential to have insurance before embarking on your holiday - in fact we consider it so important that we will not accept your booking if you are not insured.

A full copy of the insurance certificate will be sent with your confirmation of booking. As with most instances, you only insured for an event which occurs after you purchased the cover. It is essential that you read the insurance certificate. Please carefully read the paragraph heading "Health" under the Key Facts section. If for any reason it is not suitable for you, you may return it for a full refund, provided you return it within 14 days of receipt and you have not travelled or have made a claim.

A brief summary of the cover is provided below.

Section	Limit
PRE TRAVEL POLICY	
Cancellation	£5,000
TRAVEL POLICY	
Travel Delay	£100
Delay Cancellation	£5,000
Missed departure (UK - 100, Europe - £300)	£600
Baggage (under 18 years - £750)	£1,500
Single item limit (under 18 years - £150)	£250
Valuables limit (under 18 years - £150)	£200
Emergency Baggage	£100
Money	£100
Party leader	£1,000
Loss of passport	£200
Medical Expenses	£5,000,000
Curtailment of Activities	£120
Curtailment	£5,000
Personal Liability	£2,000,000
Organisers Liability	£5,000,000
Personal Accident*	£25,000
Death under 16 yrs	£10,000
Legal Expenses	£10,000

EXCESSES

- £35 apply to most sections (increased to £50 in respect of persons 18 and over)
- £50 in respect party leaders money claims
- £50 excess applicable to personal liability section (increased to £250 in respect of damage to temporary holiday accommodation), £100 applicable to organisers liability, £250 applicable to legal expenses section.

* Personal Accident Section - some benefits under this section are reduced. The full benefits schedule is provided within the full policy terms - available upon request, otherwise will be sent with your confirmation of booking.

We have to bring to attention some of the important features of your travel insurance policy.

Insurance Policy - this contains full details of the cover provided plus the conditions and exclusions which apply to it. You must read the insurance policy carefully.

Conditions and Exclusions - there are conditions and exclusions which apply to individual sections and general conditions, exclusions and warranties which apply to the whole policy.

Health - If you, or any other person on whom the travel plans depend, have ever had treatment for any heart or circulatory condition, a stroke or high blood pressure, any breathing condition (including asthma), any type of cancer, any type of diabetes, any psychological condition, any existing injury or other serious or reoccurring medical condition, any condition requiring long term prescribed medication or if you are receiving or awaiting investigation for any medical condition you must telephone the Medical Referral Helpline (details can be found on the insurance certificate) to see if additional cover is available. Insurers reserve the right to impose terms. You will receive confirmation in writing of their decision. Please note: If you are travelling as part of a school party group you need only phone Travellers Healthcheck in respect to your health condition if you are over 16 and in full time school education travelling outside Europe. All conditions for any other person on whom the travel plans must be referred to the medical referral helpline.

Property Claims - these are settled on an indemnity basis - not on a "new for old" or replacement cost basis.

Policy Limits - most sections of the policy have limits on the amount the insurer will pay under the section. Some sections also includes inner limits e.g.: for any one item, or for valuables in total.

Policy Excesses - claims under most sections of the policy will be subject to an excess. Where there is an excess, you will be responsible for paying the first part of the claim.

Reasonable care - you are required to take all reasonable care to protect yourself and your property and to act as though you are not insured.

Telling us about relevant facts - you must tell insurers or ourselves before you travel about anything which may effect your cover. This information must be completed and accurate. If you are not sure whether something is relevant you should tell us anyway. You should keep a record of any information you give us. If you do not tell insurers about something that may be relevant your cover may be refused and insurers may not cover any related claims.

Complaints - the insurance policy includes a Complaints Procedure which tells you what steps you can take if you wish to make a complaint.

Hazardous Holiday Activities - the policy does not cover any claims caused by taking part in a hazardous activity (as defined in the policy) except where forming part of a published activity provided by the Tour Operator. If uncertain please contact Ferryhill Travel.

Law - the contract will be subject to English Law unless otherwise agreed.

Ferryhill Travel is an Appointed Representative of Fogg Travel Insurance who together with the Insurers are authorised and Regulated by the Financial Services Authority (FSA).

PLEASE ENSURE YOU READ YOUR INSURANCE POLICY CAREFULLY

OUR PRICES INCLUDE

- One free place for every eight paying members.
- Travel insurance, including personal liability insurance of £2,000,000.
- Savings cards.
- Luggage labels.
- Green Michelin guide.
- Service charges and gratuities.
- Admission charges on UK Tours.

BY COACH

- Executive coach from school on UK Tours (except where stated otherwise).
- Executive coach on all European Tours.
- Full Board accommodation on all UK Tours. First meal is usually dinner on arrival, ending with packed lunch on departure.
- Half Board accommodation on all European Tours. Some restaurants in Europe will incur a supplement.
- Road tolls where applicable.
- Ferry crossings as indicated.

BY AIR

- Return flights from advertised airport.
- Passenger Service Charge.
- Government Airport Passenger Tax.
- Coaching as detailed on the itinerary.

NOT INCLUDED

- European entrance fees (except where stated).
- Drinks with meals, other than breakfast.
- Meals en route.
- Single rooms at hotels.
- Transfers to and from departure points on all Air programmes and European Coach tours.
- Passport and Visa charges.
- Security deposit required by some hotels/centres on arrival.

FINANCIAL SECURITY

We are a fully Bonded member of both the Association of British Travel Agents and the Civil Aviation Authority.

FERRY OPERATORS

We register your party with the ferry operator at time of booking, it is however, their standard practice not to confirm the sailings until they open their reservations which is usually January at the earliest. Ferry operators place restrictions on the numbers of school children on all sailings, which means that is not always possible to receive confirmation of the sailing requested, the best alternative will be booked.

PASSPORTS

- Party leaders are responsible for ensuring that all members of the group have a valid passport and visa if required.
- Allow at least 8 to 12 weeks to apply for your passport.
- Pupils under 18 years can travel on a collective Passport to most European countries. Identity cards are also required for travel to France, Germany, Italy and Austria.
- Clients who are not British/Irish citizens must check with the appropriate consulate for individual visa requirements.
- You can obtain your application forms from:

UK PASSPORTS

You can get a UK Passport application form in four ways. You can:

- collect it from a Post Office branch that offers the Passport Check & Send service
- request an application form online and IPS will send you one in the post visit www.ips.gov.uk
- call the Passport Advice line 0300 222 0000 and ask IPS to send it to you in the post
- complete the application online, in which case IPS will print out the completed form and send it to you to sign and return with supporting documents

For further information and latest fees visit: <http://www.direct.gov.uk/en/TravelAndTransport/Passports/index.htm> www.ips.gov.uk

IRISH PASSPORTS

Express Service in Northern Ireland and Great Britain The Passport Express service is now available from 70 branches of the UK Post Office in Northern Ireland and Great Britain. This is a 10 day return service.

Passport application forms may also be obtained from these post offices and you may also submit your application through these post offices for a processing fee of £6. This covers express postage to/from the Passport Office.

Passport application forms are available from all Garda stations, Post Offices which provide the Passport Express service, many Libraries and Citizens Advice Centres and also from the Passport Offices in Dublin and Cork.

You should submit your application to the Passport Office in Dublin or Cork (if you live in Munster). If you live abroad send your application to your nearest Diplomatic and Consular Missions.

The Dublin and Cork Offices may be contacted on:

Passport Office Dublin Tel. 00 353 1 671 1633 or LoCall 1890 426 888

Passport Office Cork Tel. 00 353 21 494 4700 or LoCall 1890 426 900
Visit www.dfa.ie for latest information and fees.

TRANSPORT ONLY

Should you require transportation only, please contact us for prices.

YOUR PLANS

Many of our group leaders have their own special requirements and plans for their educational visit, for which we would be pleased to quote. All our suggested itineraries can be amended to suit your particular needs - for instance, a combination of countries or an EC project. We can also offer a wide range of air programmes to Belgium, Germany and Switzerland.

EARLY BOOKING

We recommend early booking for all destinations, particularly Paris and London around Easter and Edinburgh in May and June.

BROCHURE VALIDITY

Tours in this brochure are available from 01/09/2010 to 31/08/2011.

HOW TO BOOK

Give us a ring on 028 9045 4181 to make your provisional booking which will be held for 14 days. We will forward your option details and Booking Form.

PAYMENT DETAILS

	First Deposit on Booking	Second Deposit Due 6 Weeks After Booking
UK Coach Tours	£30	None
UK Air Tours*	£75	£40
European Coach Tours	£50	£50
European Air Tours*	£100	£100

FINAL BALANCE

UK Coach & Air Tours
8 weeks prior to departure

European Coach & Air Tours
10 weeks prior to departure

IMPORTANT NOTE

*Groups who have chosen to travel with a Low Cost Airline must make an additional payment to cover the cost of flights at time of booking, the cost of which is non refundable, non transferable and irrecoverable.

CANCELLATIONS

Ferryhill Travel Ltd will apply the following scale of cancellation charges:

More than 84 days - All deposits paid

84 to 29 days - 55% (or total deposits due if greater)

28 to 0 days - 100%

Cancellations must be made in writing and signed by the party leader. If any cancellation brings the number of pupils below the minimum number required for a particular tour price or a particular set of concessions for a accompanying adults the tour price and concession will be adjusted accordingly. The cost of "Low-Cost" airline flights are irrecoverable.

PHOTOGRAPHIC IDENTIFICATION

Most airlines now require photographic ID for each passenger - even on domestic routes.

DISABLED PASSENGERS

In order to properly assess if and how we can accommodate you on our tours, if any member of your group suffers from a disability or serious illness you must contact us before booking and complete our ABTA checklist for disabled and less mobile passengers.

HEALTH

At time of booking you must inform the insurer of all serious or chronic pre-existing medical problems relating to all persons on whom the holiday or journey plans depend.

CHANGES/CANCELLATIONS

All changes/cancellations should be notified in writing. Should you be able to replace a member there will be no cancellation penalty. Cancellation charges are levied as stated in our booking conditions, but can usually be reclaimed under the terms of our insurance policy. Please remember that the cost of your tour is dependent on the number of paying members travelling.

INSURANCE PROTECTION

On receipt of your deposit you are automatically covered by our comprehensive insurance cover arranged for Ferryhill Travel though Fogg Travel Insurances Ltd.

FREE PLACE RATIO

Pupils 8 16 24 32 40 48 56 64
Adults 1 2 3 4 5 6 7 8

VAT

All UK prices are inclusive of VAT where applicable at the current rate.

EUROPEAN HEALTH INSURANCE CARD

This card is essential while visiting another EU country to avail of state funded health care scheme in the relevant country. The quickest and easiest way to apply for an EHIC is on line at: www.ehic.org.uk

EC DIRECTIVE ON PACKAGE TRAVEL

Ferryhill comply with all aspects of the EC Directive which came into force on 01 January 1993 imposing very strict liability on Tour Operators, particularly in terms of financial guarantees and product liability.

ferryhill TRAVEL

131 Cregagh Road
Belfast BT6 0LA
Tel: (028) 9045 4181
Fax: (028) 9073 9505
Email: info@ferryhilltravel.co.uk



Photographs courtesy of Austrian, Belgian, French, German, Dutch, Italian and Swiss National Tourist Boards.
Design: Doghouse Creative. Printing: Impro Printing, Belfast (028) 9077 7795